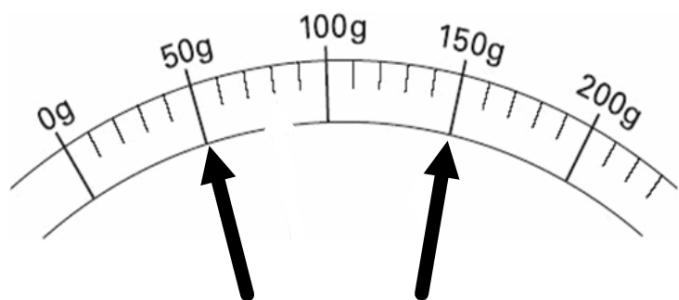


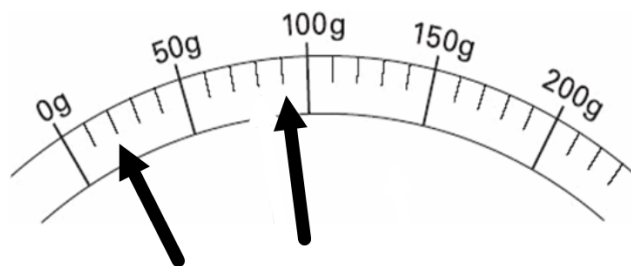
LO: I can read weight on a scale.

SC: I can work out what the scale is counting in.

I can work out the value of the unmarked divisions.

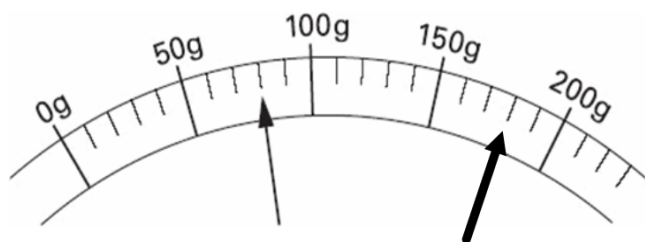


the scales read ____g and ____g



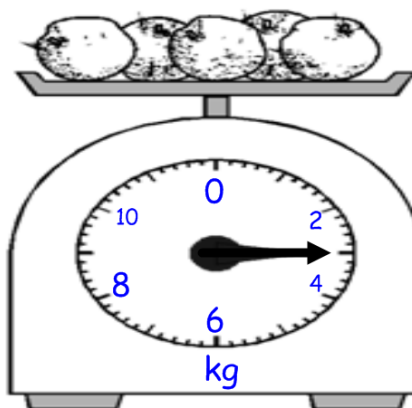
Write the weight of each arrow

____g ____g



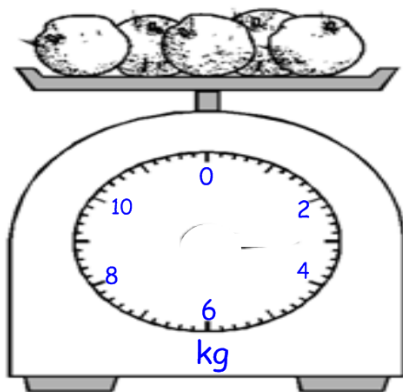
write the measurement of each arrow.

____g ____g



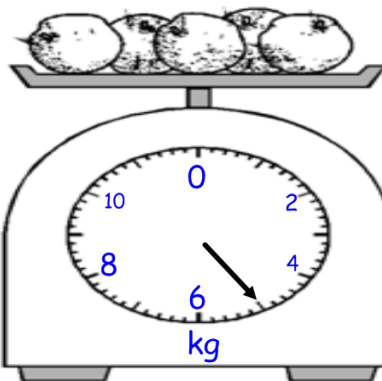
The scales are reading

____ kg



Show 3 kg on the scales.

Show 7kg on the scales



The scales are ____ kg.

If I add another 2kg the scales will be on

____ kg