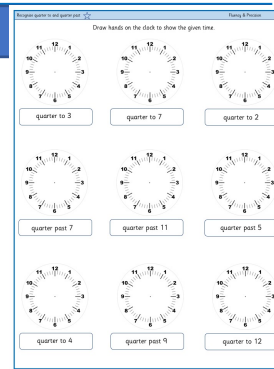


## ★ Recognise quarter to and quarter past

Children continue to work with quarter to and quarter past. They draw the clock hands on clocks to show the given time.

Children on this sheet have a row of quarter to to practise and consolidate, and then a row of quarter past to practise and consolidate, before moving on to a mixed row.

masterthecurriculum.co.uk

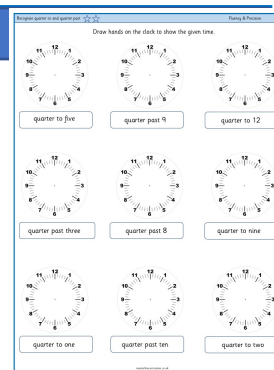


## ★★ Recognise quarter to and quarter past

Children continue to work with quarter to and quarter past. They draw the clock hands on clocks to show the given time.

Children on this sheet have a mix of quarter to and quarter past to draw.

masterthecurriculum.co.uk

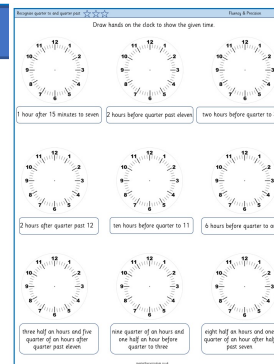


## ★★★ Recognise quarter to and quarter past

Children continue to work with quarter to and quarter past. They draw the clock hands on clocks to show the given time.

Children on this sheet are given a time and then need to work out the time after minutes and hours are added.

masterthecurriculum.co.uk



## Reasoning & Problem Solving

### Recognise quarter to and quarter past

Children continue to demonstrate their understanding of time by answering reasoning tasks.

Reasoning & Problem Solving

2

Tia has drawn hands on the clock for quarter past 11.

Can you explain the mistake she has made?

quarter past 11

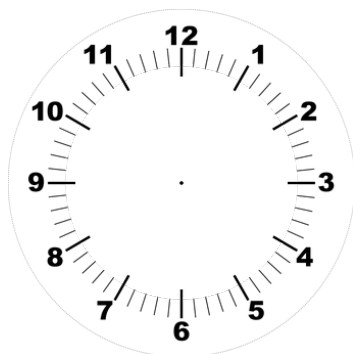
The farm train leaves from the station at quarter past and quarter to every hour.

Zach's uncle brings him to the farm at 3 o'clock. He will stay there until 6 o'clock.

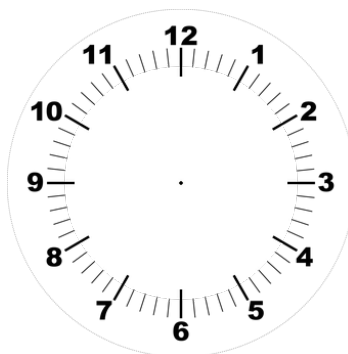
What times can Zach get on the train?



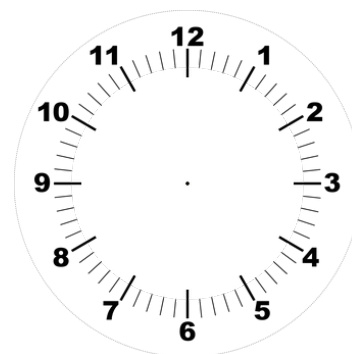
Draw hands on the clock to show the given time.



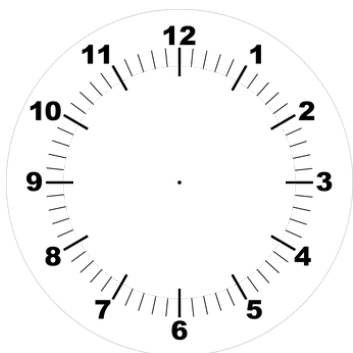
quarter to 3



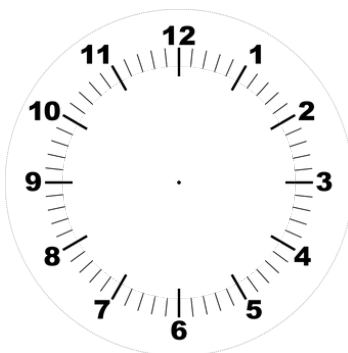
quarter to 7



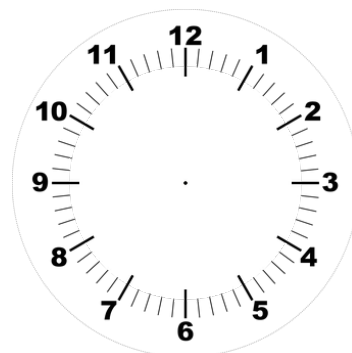
quarter to 2



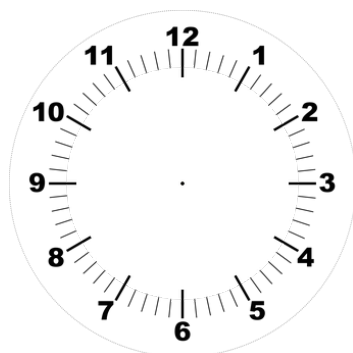
quarter past 7



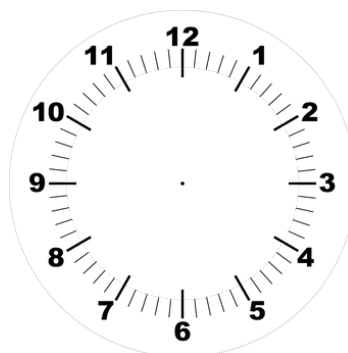
quarter past 11



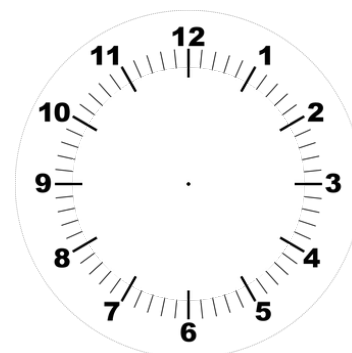
quarter past 5



quarter to 4



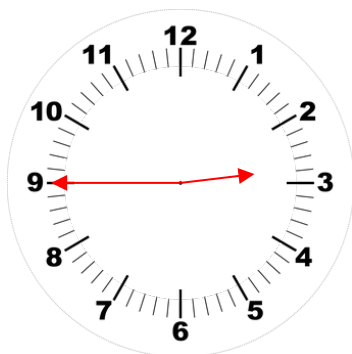
quarter past 9



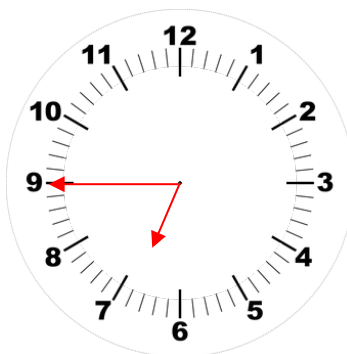
quarter to 12



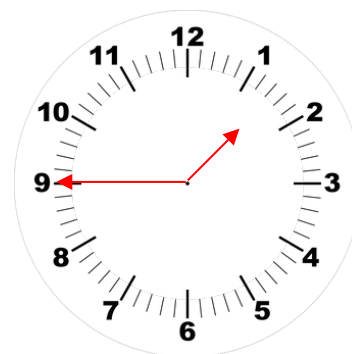
Draw hands on the clock to show the given time.



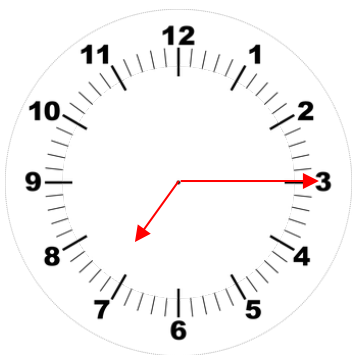
quarter to 3



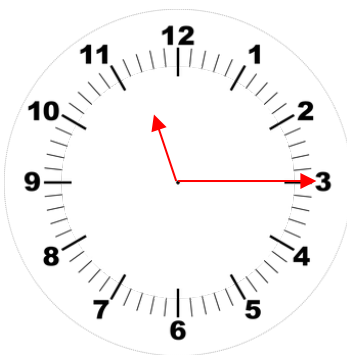
quarter to 7



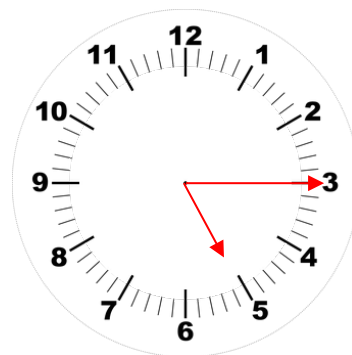
quarter to 2



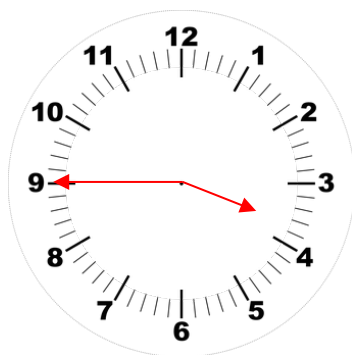
quarter past 7



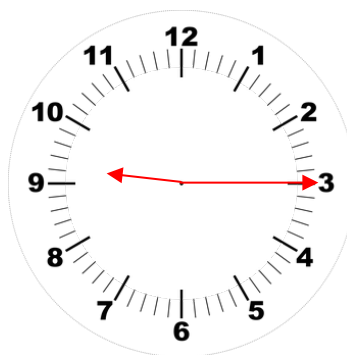
quarter past 11



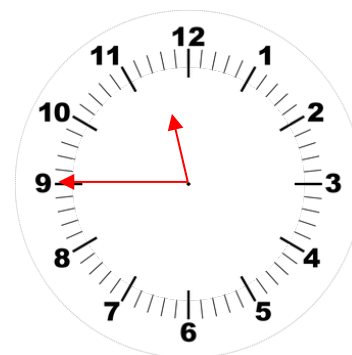
quarter past 5



quarter to 4



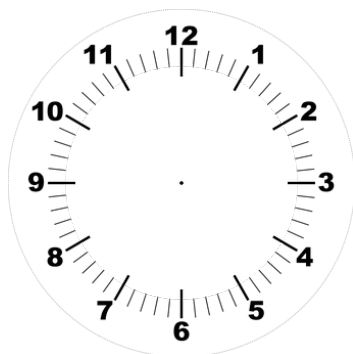
quarter past 9



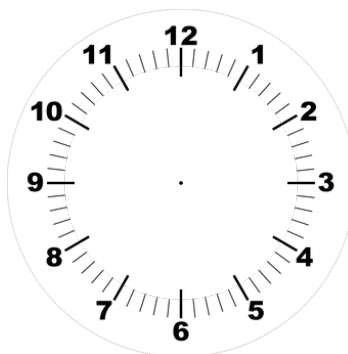
quarter to 12



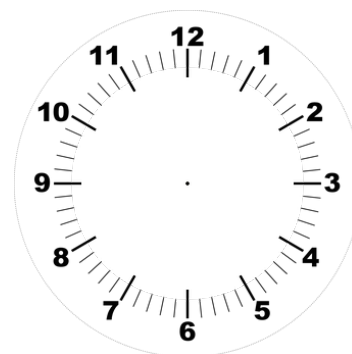
Draw hands on the clock to show the given time.



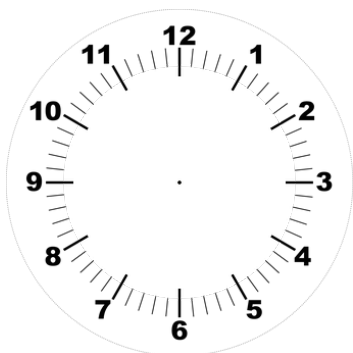
quarter to 3 o'clock



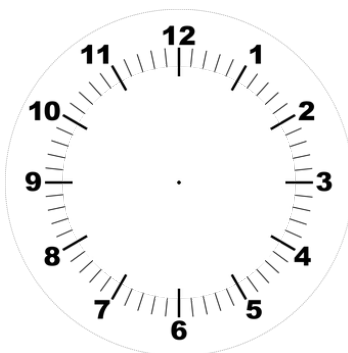
quarter to 7 o'clock



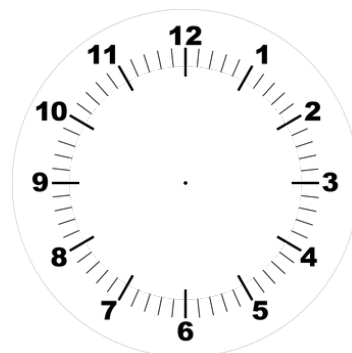
quarter to 2 o'clock



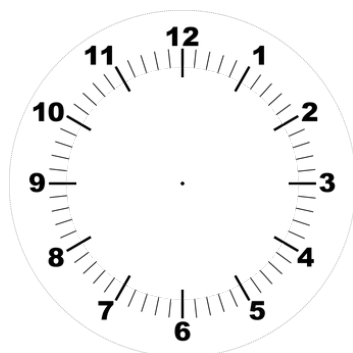
quarter past 7 o'clock



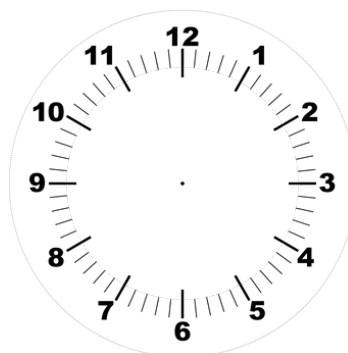
quarter past 11 o'clock



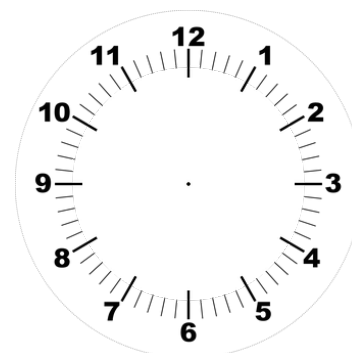
quarter past 5 o'clock



quarter to 4 o'clock



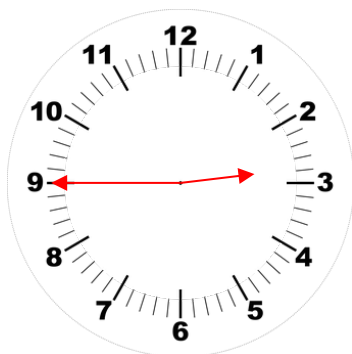
quarter past 9 o'clock



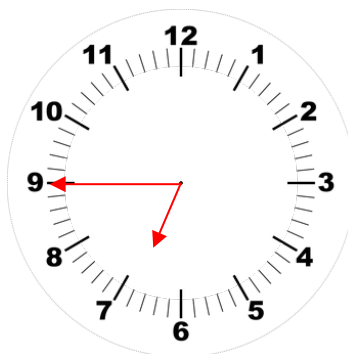
quarter to 12 o'clock



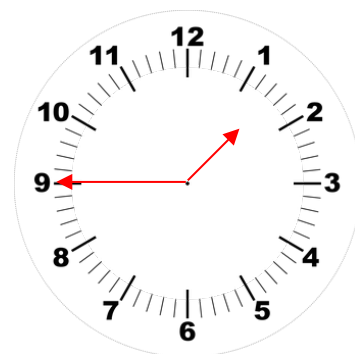
Draw hands on the clock to show the given time.



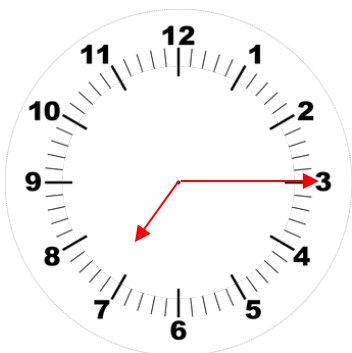
quarter to 3 o'clock



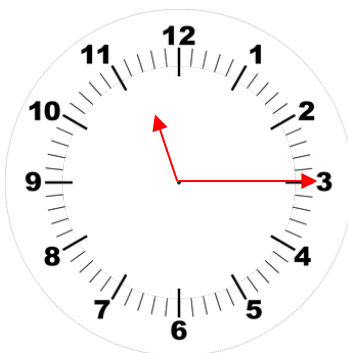
quarter to 7 o'clock



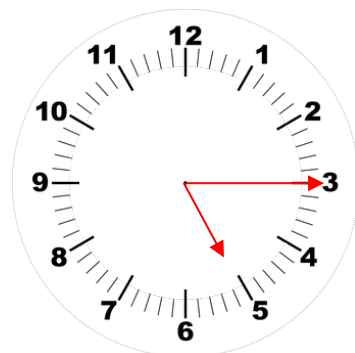
quarter to 2 o'clock



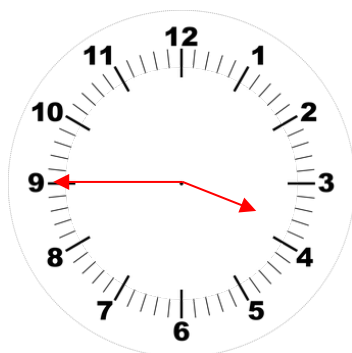
quarter past 7 o'clock



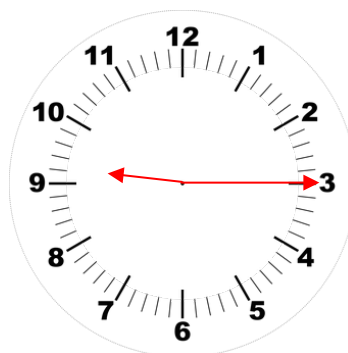
quarter past 11 o'clock



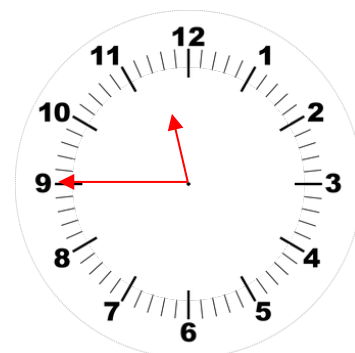
quarter past 5 o'clock



quarter to 4 o'clock



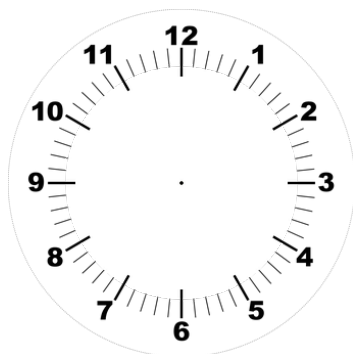
quarter past 9 o'clock



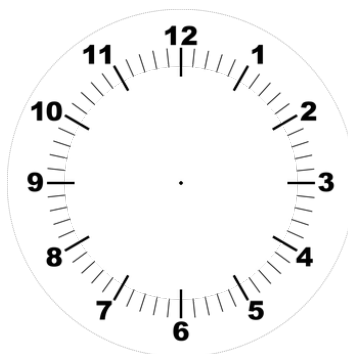
quarter to 12 o'clock



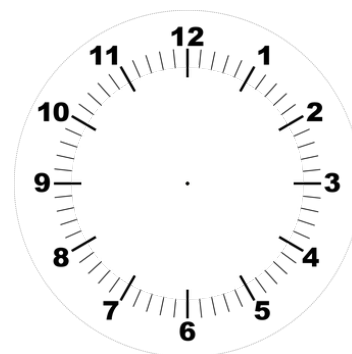
Draw hands on the clock to show the given time.



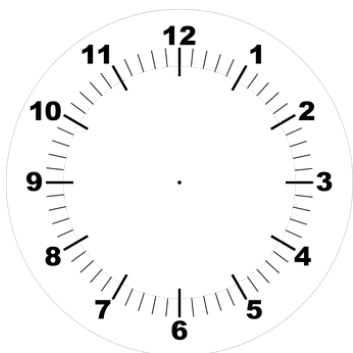
quarter to five



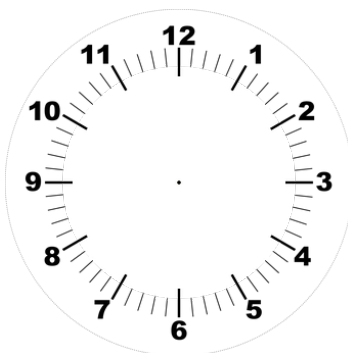
quarter past 9



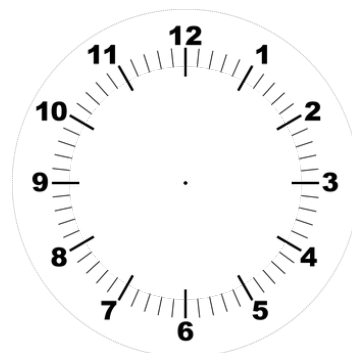
quarter to 12



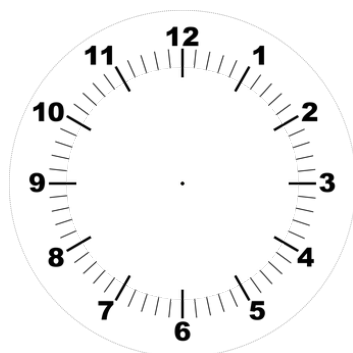
quarter past three



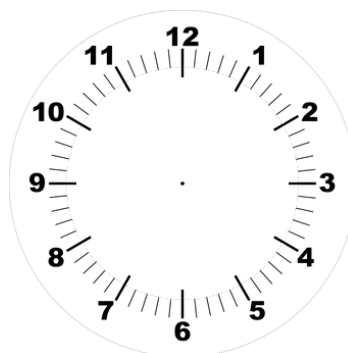
quarter past 8



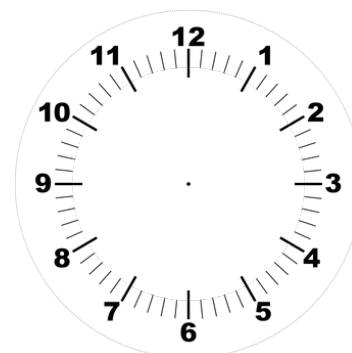
quarter to nine



quarter to one



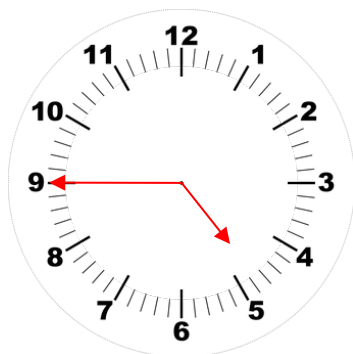
quarter past ten



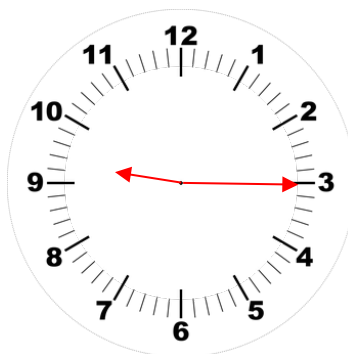
quarter to two



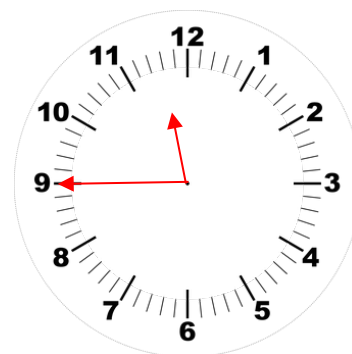
Draw hands on the clock to show the given time.



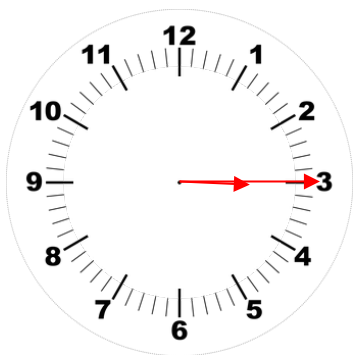
quarter to five



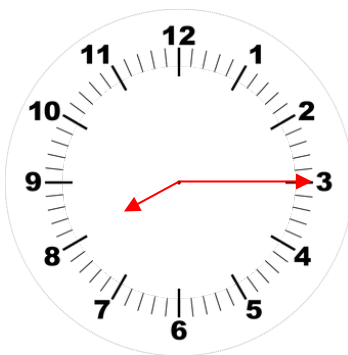
quarter past 9



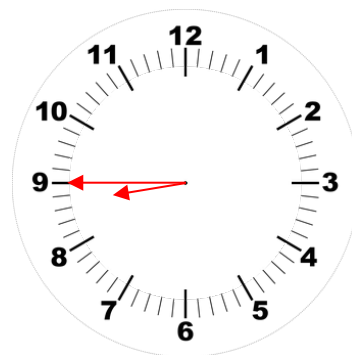
quarter to 12



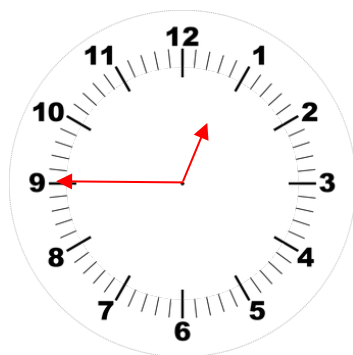
quarter past three



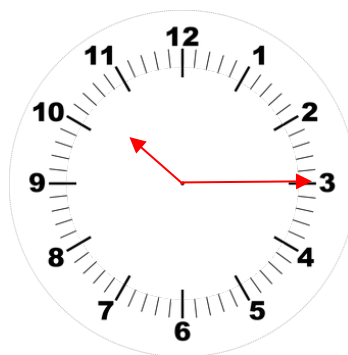
quarter past 8



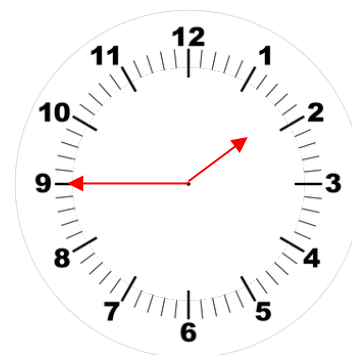
quarter to nine



quarter to one



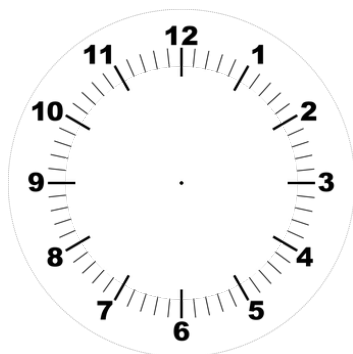
quarter past ten



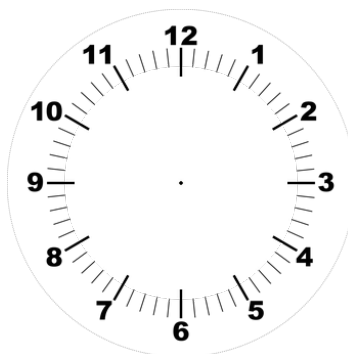
quarter to two



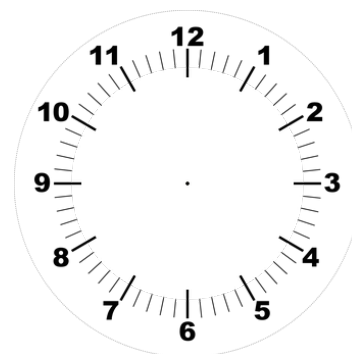
Draw hands on the clock to show the given time.



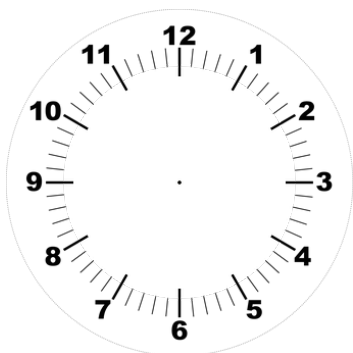
quarter to five o'clock



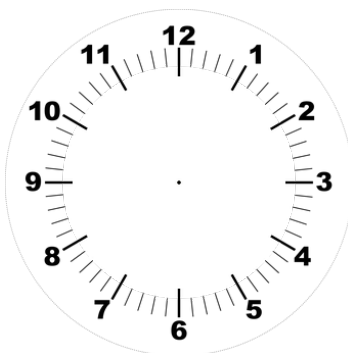
quarter past 9 o'clock



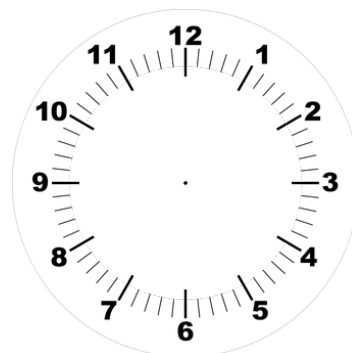
quarter to 12 o'clock



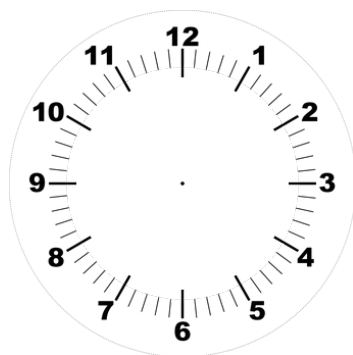
quarter past three o'clock



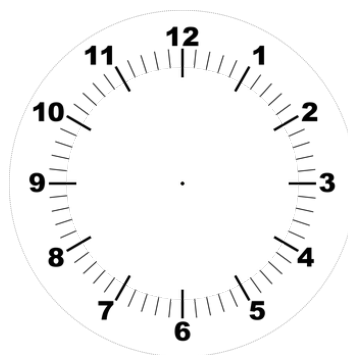
quarter past 8 o'clock



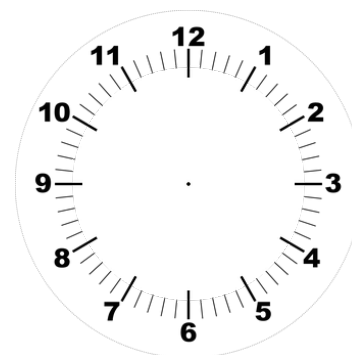
quarter to nine o'clock



quarter to one o'clock



quarter past ten o'clock

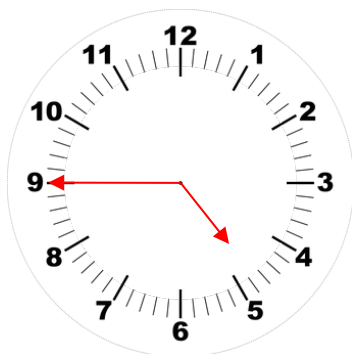


quarter to two o'clock

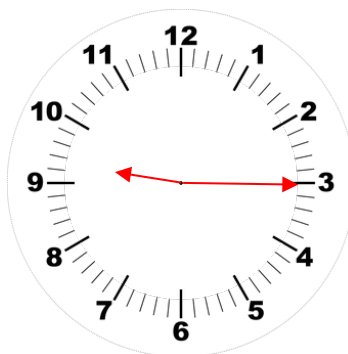




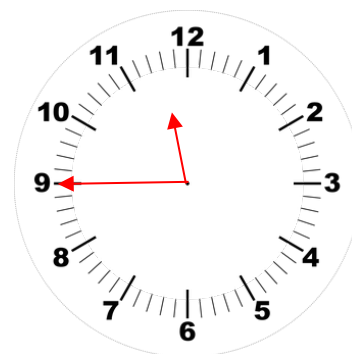
Draw hands on the clock to show the given time.



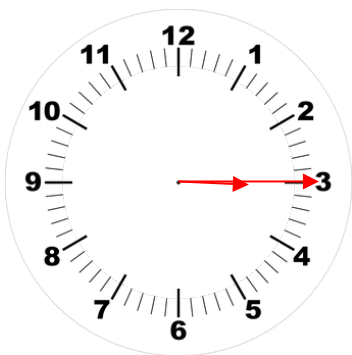
quarter to five o'clock



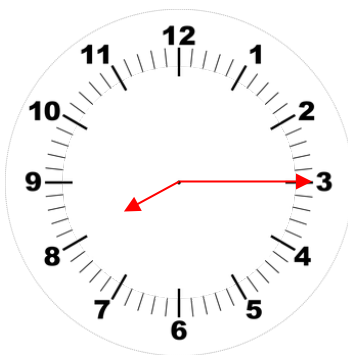
quarter past 9 o'clock



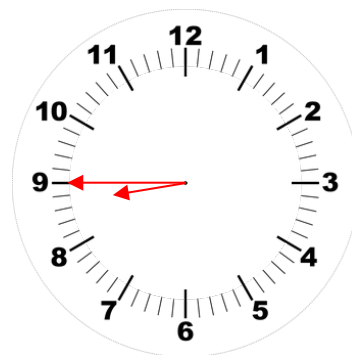
quarter to 12 o'clock



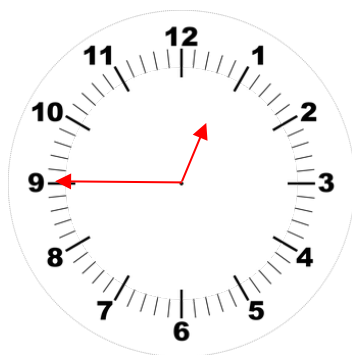
quarter past three o'clock



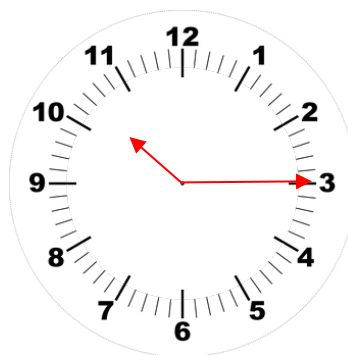
quarter past 8 o'clock



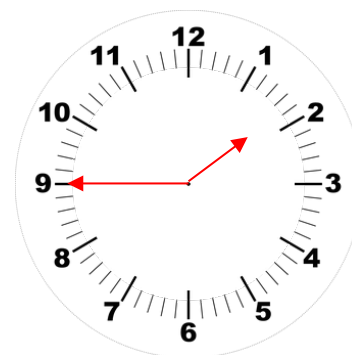
quarter to nine o'clock



quarter to one o'clock



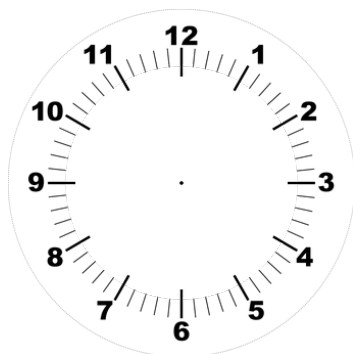
quarter past ten o'clock



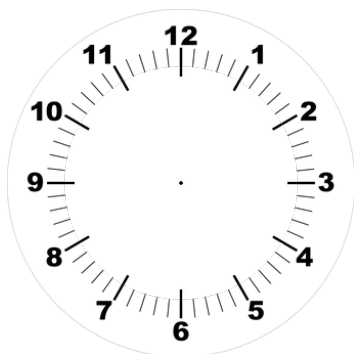
quarter to two o'clock



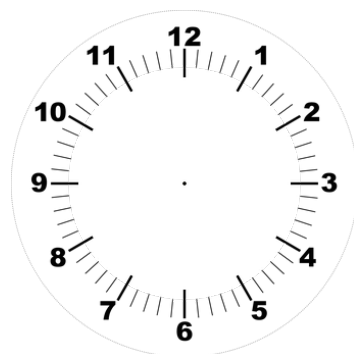
Draw hands on the clock to show the given time.



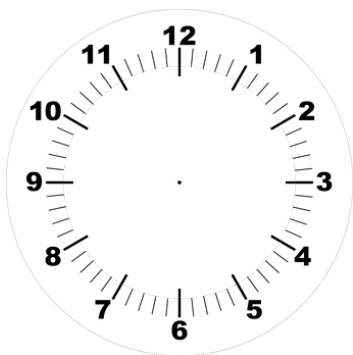
1 hour after 15 minutes to seven



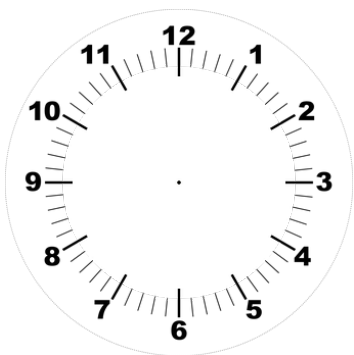
2 hours before quarter past eleven



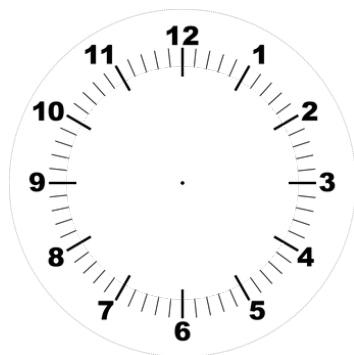
two hours before quarter to 3



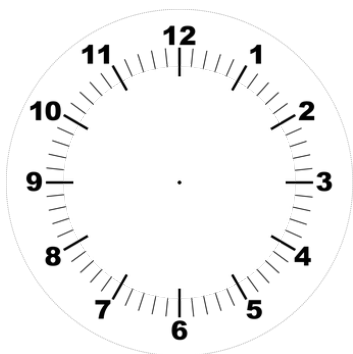
2 hours after quarter past 12



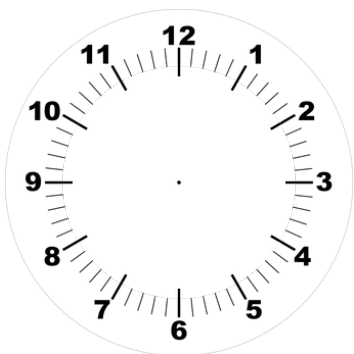
ten hours before quarter to 11



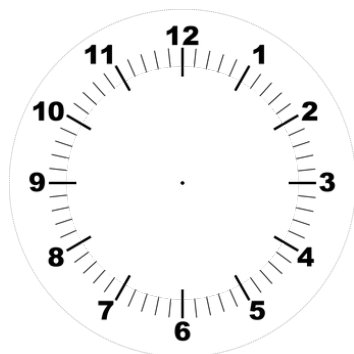
6 hours before quarter to one



three half an hours and five  
quarter of an hours after  
quarter past eleven



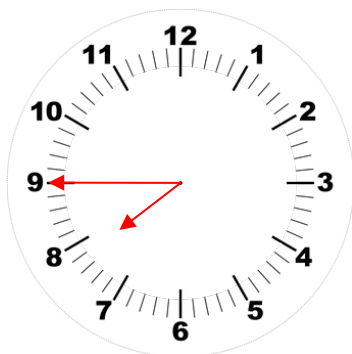
nine quarter of an hours and  
one half an hour before  
quarter to three



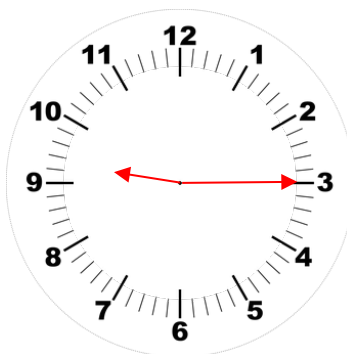
eight half an hours and one  
quarter of an hour after half  
past seven



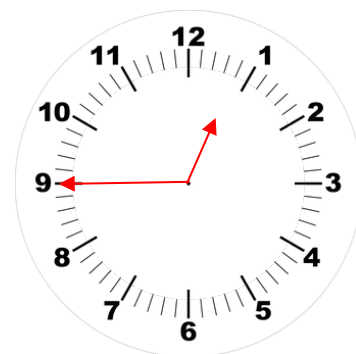
Draw hands on the clock to show the given time.



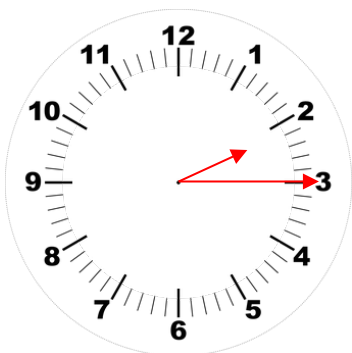
1 hour after 15 minutes to seven



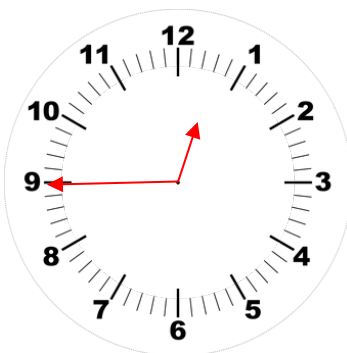
2 hours before quarter past eleven



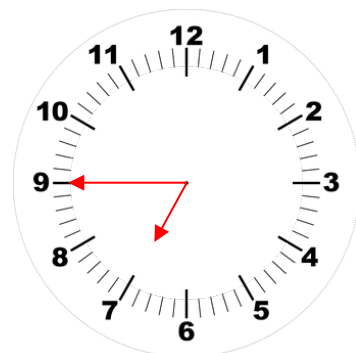
two hours before quarter to 3



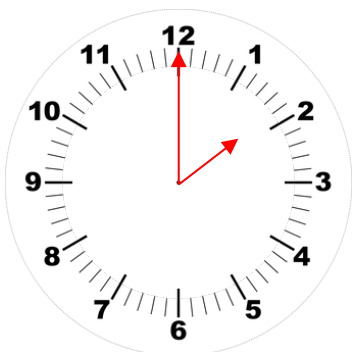
2 hours after quarter past 12



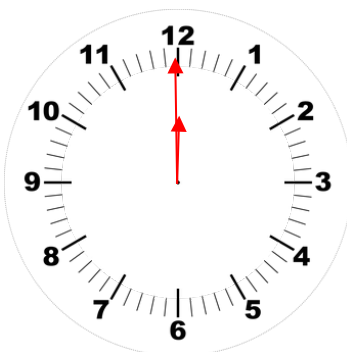
ten hours before quarter to 11



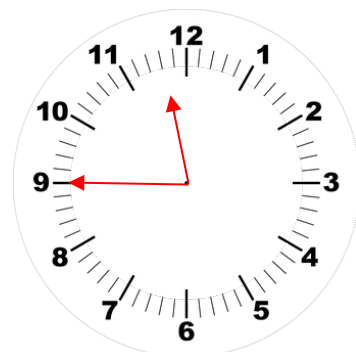
6 hours before quarter to one



three half an hours and five quarter of an hours after quarter past eleven



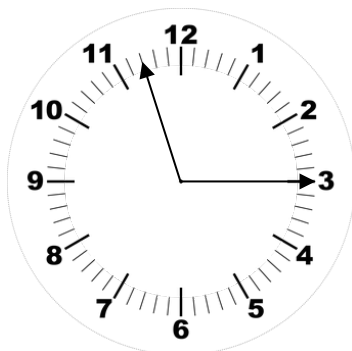
nine quarter of an hours and one half an hour before quarter to three



eight half an hours and one quarter of an hour after half past seven

Tia has drawn hands on the clock for quarter past 11.

Can you explain the mistake she has made?



quarter past 11

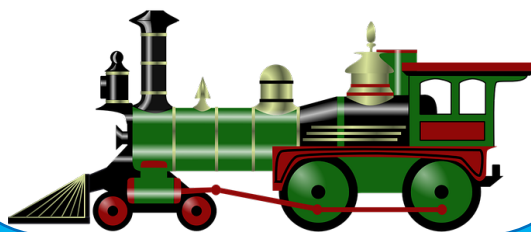
masterthecurriculum.co.uk

The farm train leaves from the station at quarter past and quarter to every hour.

Zach's uncle brings him to the farm at 3 o'clock. He will stay there until 6 o'clock.

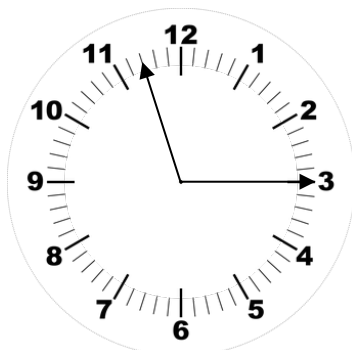


What times can Zach get on the train?



Tia has drawn hands on the clock for quarter past 11.

Can you explain the mistake she has made?



quarter past 11

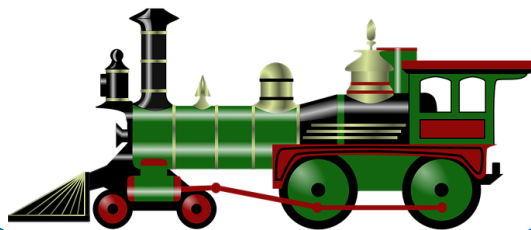
masterthecurriculum.co.uk

The farm train leaves from the station at quarter past and quarter to every hour.

Zach's uncle brings him to the farm at 3 o'clock. He will stay there until 6 o'clock.

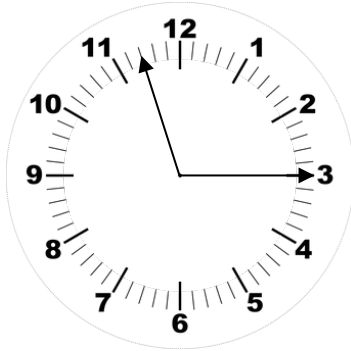


What times can Zach get on the train?



Tia has drawn hands on the clock for quarter past 11.

Can you explain the mistake she has made?



quarter past 11

The hour hand should be shorter.

masterthecurriculum.co.uk

The farm train leaves from the station at quarter past and quarter to every hour.

Zach's uncle brings him to the farm at 3 o'clock. He will stay there until 6 o'clock.

Quarter past 3

Quarter to 4

Quarter past 4

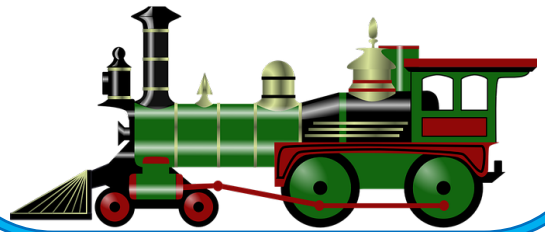
Quarter to 5

Quarter past 5

Quarter to 6

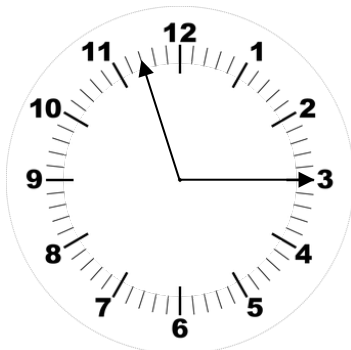


What times can Zach get on the train?



Tia has drawn hands on the clock for quarter past 11.

Can you explain the mistake she has made?



quarter past 11

The hour hand should be shorter.

The farm train leaves from the station at quarter past and quarter to every hour.

Zach's uncle brings him to the farm at 3 o'clock. He will stay there until 6 o'clock.

Quarter past 3

Quarter to 4

Quarter past 4

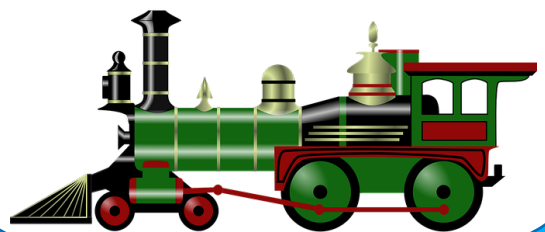
Quarter to 5

Quarter past 5

Quarter to 6



What times can Zach get on the train?



masterthecurriculum.co.uk