



**Year 1  
Maths**

**Wednesday 24/6/2020**

**Telling the Time**

**Aim: To be able to tell the time to the half hour.**

**I can tell different 'half past' times on a clock.**

**I can draw the hands on a clock to show different  
'half past' times.**

(Home learners: If you need more practise at making and reading o'clock times, please continue with that, using today's activity sheet for 'o'clock instead)

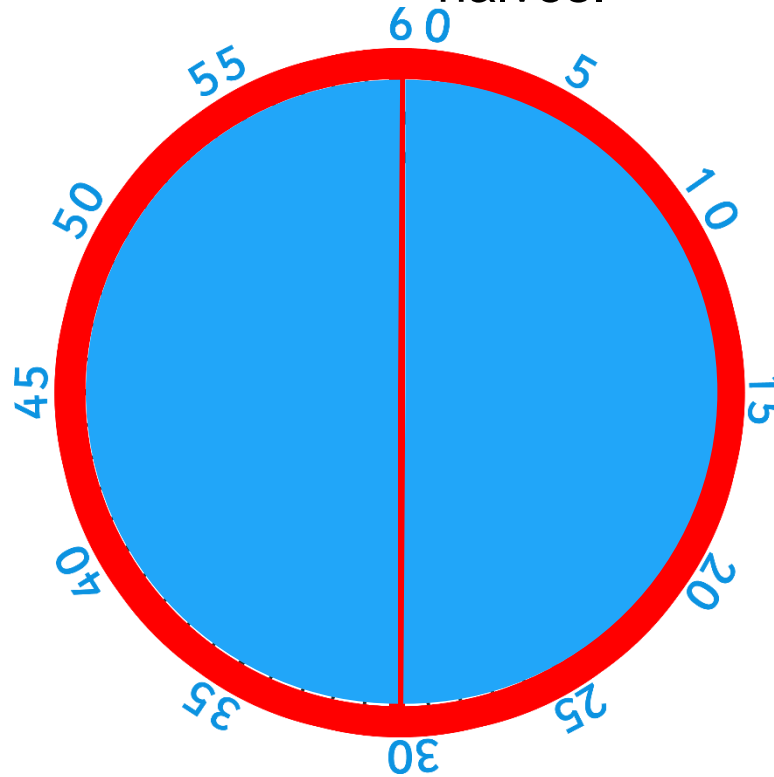


# Starter: Months of the Year

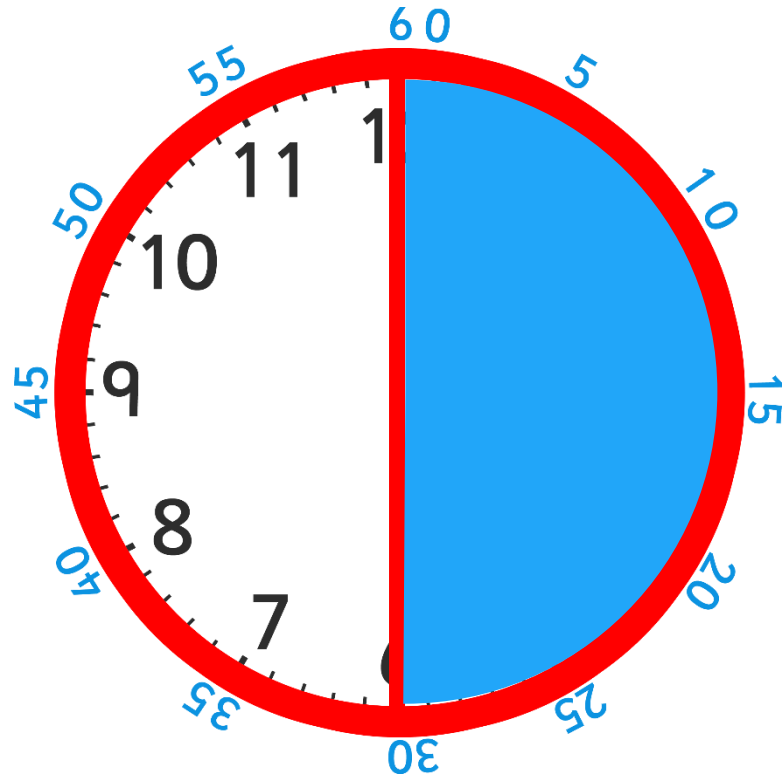
- Can you recite the 12 months in the correct order?
- Which month comes **after** February?
- Which month comes **before** June?
- Which month comes **after** December?
- Which month comes **before** October



- A clock face is a full circle which is made up of 2 halves.

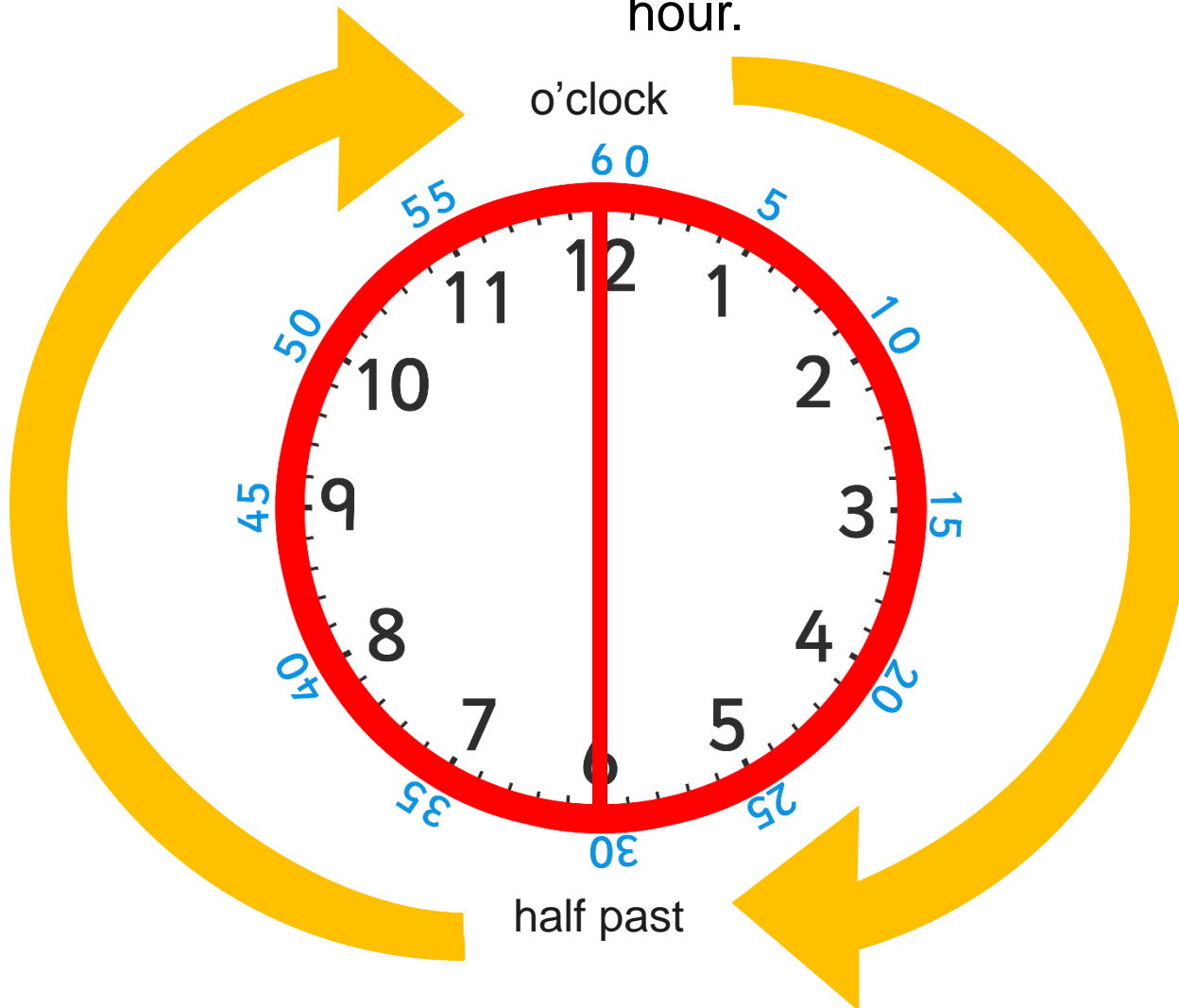


How many minutes make up half of an hour?



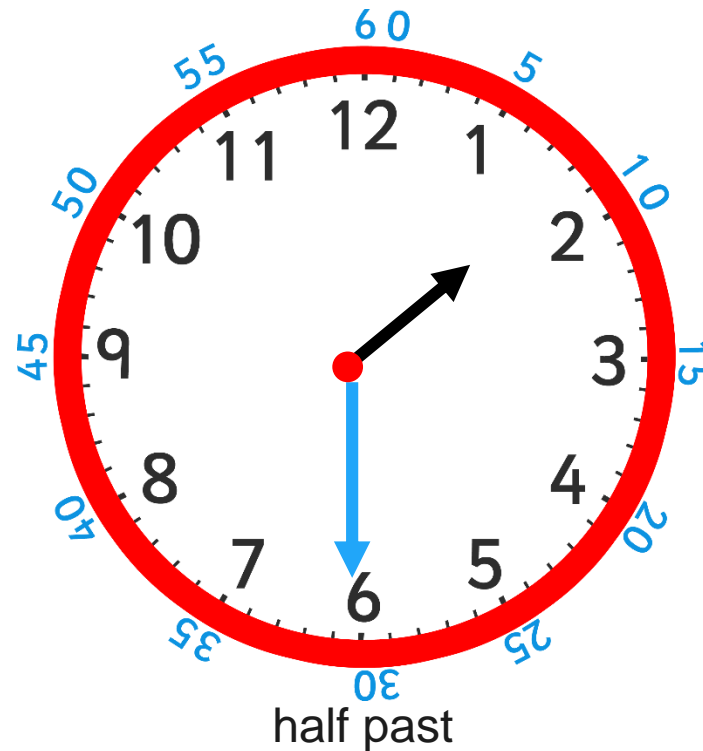


When it is 30 minutes past the hour we say '**half past**' the hour.





- Look at this time.
- The long hand is pointing at **6**, which is halfway around the clock.
- Where is the short hand pointing? Is it on the number?
  - It's half way between **1** and **2**.



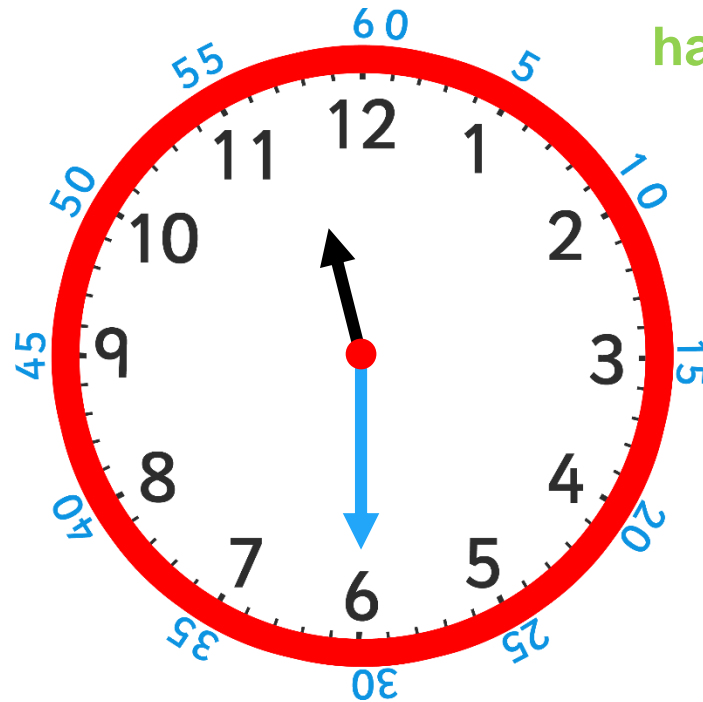


- What time is this clock showing?

Where is the **long hand** pointing?

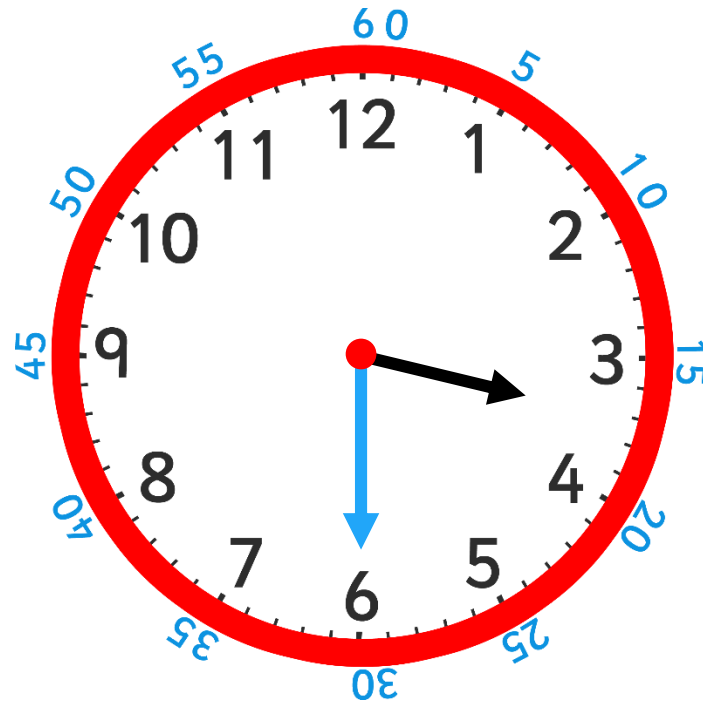
6

Where is the **short hand** pointing?  
halfway between 11 and 12





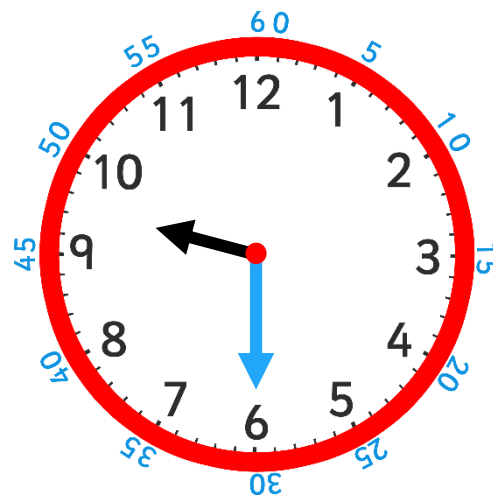
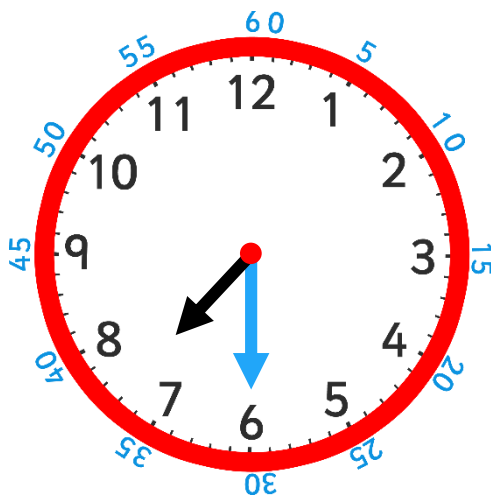
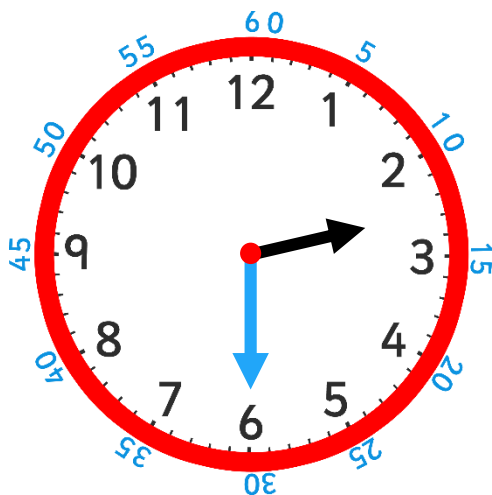
- What do you notice about the short hand?
  - It is halfway between 3 and 4.
- What time is this clock showing?







- Which clock is showing **half past 2**?
- Which clock is showing **half past 9**?
- Which clock is showing **half past 7**?



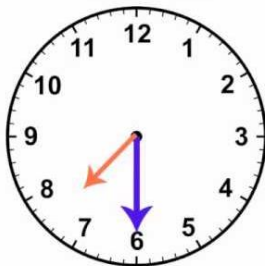


# Activity:

You are going to draw the hands on your clock to show different 'half past' times.

Remember: the **long/ minute** hand always points to **6** when it is "half past".

The **short/ hour** hand points half way between two hours so, if it is **half past 7**, it will be half way between the 7 and 8 .It will look like this:





# Can you draw each of these times on your clock in turn?

- half past 8
- half past 3
- half past 1
- half past 10
- half past 5
- half past 2
- half past 11
- half past 12
- half past 4
- half past 6

*(Home learners: Please use the activity sheet provided and draw each time on a new clock face. You may also want to watch the BBC Bitesize clip and complete the quiz at*

*[:https://www.bbc.co.uk/bitesize/topics/zhk82hv/articles/zcm dwxs](https://www.bbc.co.uk/bitesize/topics/zhk82hv/articles/zcm dwxs)*



# Finally...

- Bob thinks that the time is “ **6 past 1**”.
- Is he correct? Explain your thinking.

