

Monday

Today we are thinking about
adding the suffix
ful and less to a verb

grace - **ful**

grace - **less**

With your talk partner decide
what adding these suffixes
does to the verb.

Graceful = full of grace

Graceless = no grace

Note that when you add the suffix
ful it only has one l

Write the word that would go
with these sentences.

- Full of hate
- hateful
- Full of joy
- joyful
- No harm
- harmless
- No love
- loveless

Tuesday

Work out whether you need to add
the suffix *ful* or *less* to these
sentences

e.g. 1

ful

less

She **does not** have much breath.
She is breathless



Why?

Because she **does not** have any breath.

e.g.2.

ful

less

She dances with grace.

She is a
graceful dancer

Why?

Because she **has** grace.



1.

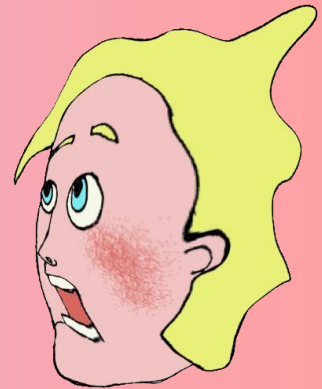
ful

less

He was afraid of
the headless ghost



Why?



2.

ful

less

The man does not take care.
He is careless

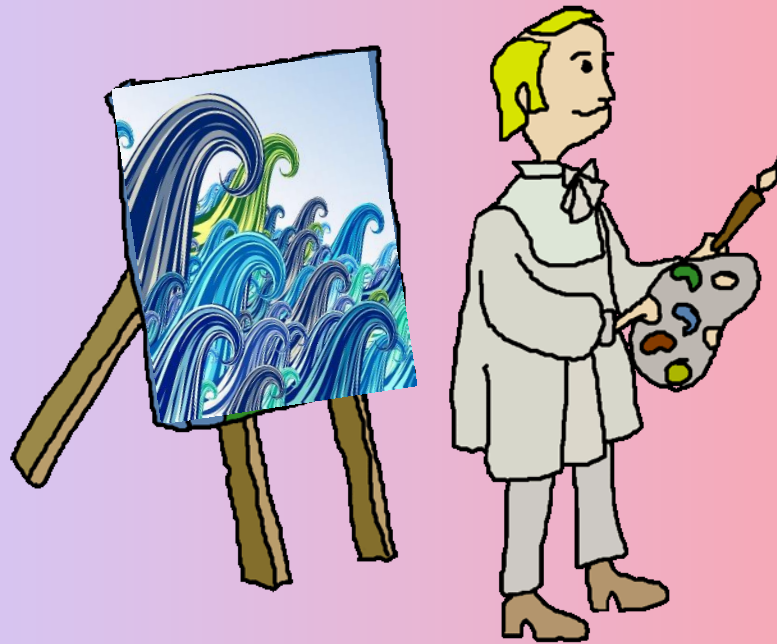


3.

ful

less

The picture is very
colour ful



Why?

4.

ful

less

We enjoyed the wedding ,
it was joy ful



5.

ful

less

She did not show any fear.
She was fearless.

Why?



6.

ful

less

The pan is very hot. She
must be careful

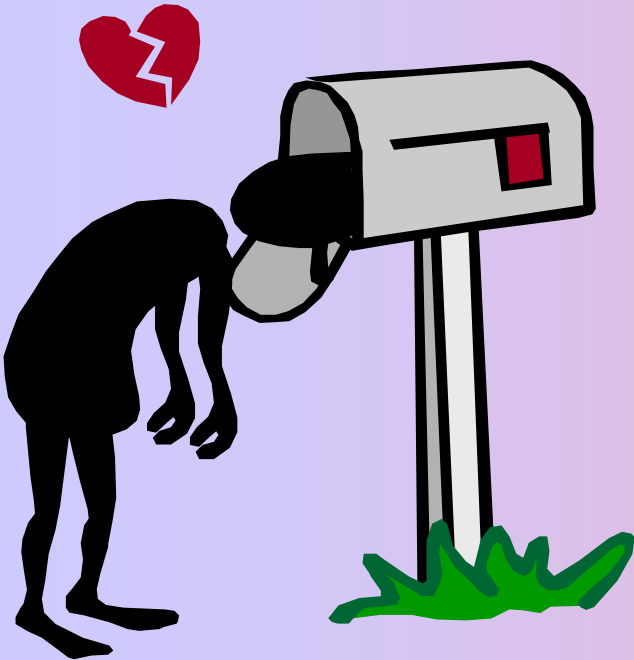


7.

ful

less

He does not have any friends.
He is friendless



8.

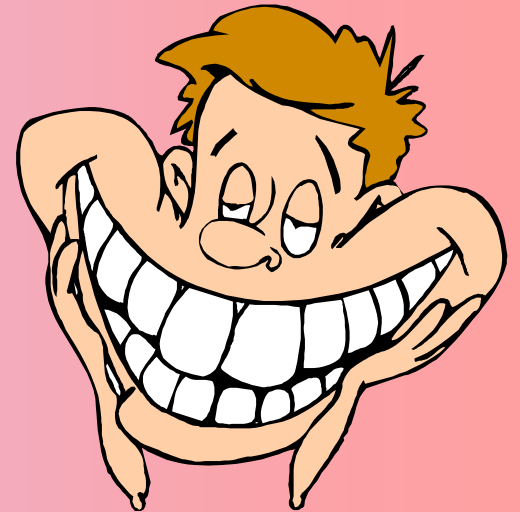
ful

less

He always has a big smile.

He is always cheerful

Why?

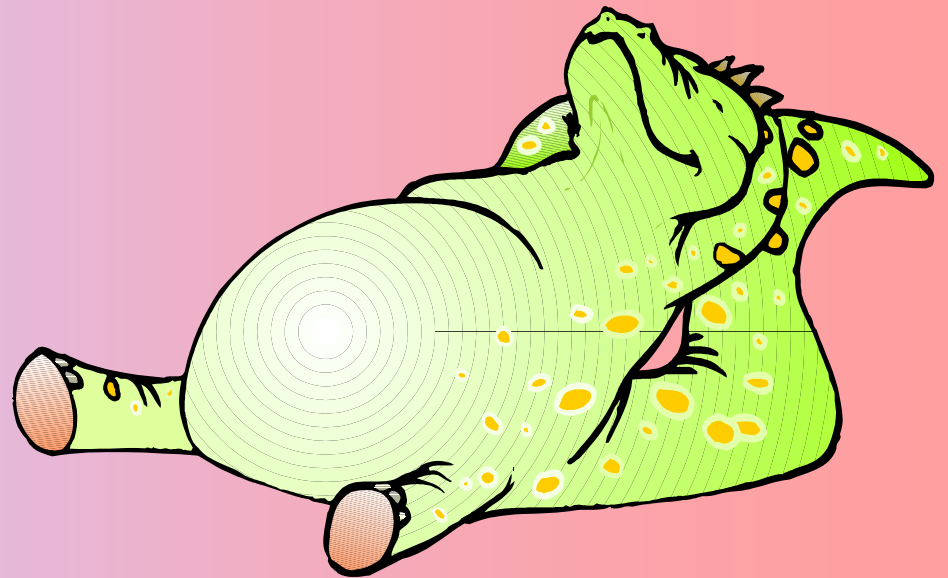


9.

ful

less

He is getting lots of rest.
He needs a restful sleep.



What did you notice?

To **have** something add**ful**..

To **not have** something add ..**less**..



Well done, you finished!