



Welcome to Year 5





WELCOME TO YEAR 5



LIME CLASS

CEDAR CLASS

Mr Tinsley (Class Teacher)

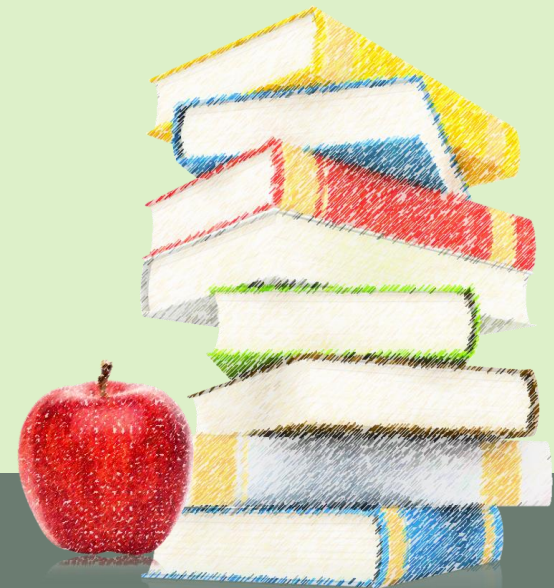
Miss Rahman (Class Teacher)

Mrs Shelke

Mrs Fatima

Miss McKingley

Mrs Eng



YEAR 5



Curriculum



Year 5 Overview

Topic	Autumn		Spring		Summer	
	North America	Outer Space and Anglo Saxons	Vikings	Mountains	Ancient Greeks	Rivers
Trips / visits			Portals to the Past – Viking Workshop Young Voices (O2 Arena)		Year 5 Residential	River Study
Writing Books or inspirational text source	Into the Forest, Anthony Browne Purpose and audience: To create a setting description and dialogue. (Audience – year 5 children) Various creation myths Purpose and audience: For children to create their own version.	Cosmic – Frank Cottrell-Boyce Purpose and audience: To write a short narrative piece To transform a narrative into a playscript using the correct features. Playscripts – focus. Various newspaper articles Video: <i>the planets</i> Purpose and audience:	Viking Boy, <u>by Tony Bradman</u> Character descriptions. Character feelings and emotions Video stimulus – Wallace And Grommit Purpose and audience: To write a short text explaining to other children how a Wallace	Kensuke's Kingdom – Michael Morpurgo (extended narrative) Purpose and audience: a) Write own island adventure story in the style of Kensuke's Kingdom for Dorking Library writing competition) b) a short diary extract	Greek Myths (various) Purpose and audience: To write our own version of a Greek myth for other children to enjoy. Follow up to residential – 'Facing Your Fears' Narrative writing – describing settings, characters and building atmosphere through drama	Persuasion unit. Write a persuasive letter. Purpose and audience – Write a letter to the headteacher to persuade against shortening summer holidays. Various river poetry (The River by Valerie Bloom, Down <u>By</u> The Old River by Charles M Moore, The





Curriculum



Autumn 1 - North America

Autumn 2 - Anglo Saxons

Spring 1 - Vikings

Spring 2 - Mountains

Summer 1 - Ancient Greece

Summer 2 - Rivers





UNIFORM



(List and suppliers available on the Website)

PLEASE MAKE SURE ALL UNIFORM IS CLEARLY NAMED

Please see handout or check the Uniform page on the Website.

<https://www.stpaulsschool-dorking.co.uk/page/?title=Uniform&pid=109>

At St Paul's we feel that uniform is really important as it helps us to feel together as a community and to take pride in our sense of unity. We have simplified our uniform so that we have just one uniform all year round.

Uniform (All year round) – All Years

- Logo embossed navy-blue sweatshirt or cardigan
- Pale blue polo shirt with logo
- Navy-blue trousers/shorts or Navy-blue skirt/pinafore
- Plain Navy-blue socks or plain Navy-blue tights.
- Black school shoes – not trainers or ankle boots (unless special permission is given)
- Sky blue and white checked summer dress (Summer alternative only between Easter and October half term).
- white socks
- Pac-a-mac (to be kept in back-pack at all times).
- Warm coat for Winter (bright colours are preferable due to safety when walking to and from school on dark/dim mornings or afternoons).

PE Uniform

- Logo embossed Navy-blue PE T-Shirt
- Navy-blue shorts or skirt – no shorter than mid-thigh
- Plain navy-blue joggers or plain navy-blue leggings (no logos, stripes or colours).
- Logo embossed navy-blue sweatshirt OR Logo embossed navy-blue hoodie. (Please note: cardigans cannot be worn for PE for safety reasons).
- School Shoes (as above) – to be worn into School on PE Days
- Navy-blue socks (no tights please).
- Logo embossed PE Bag (available from the School Office) containing:
 - Trainers (these should be kept in School in the PE Bag (above) and will be used for PE and break times on the field).
 - A plain Navy-blue base layer top may be worn for extra warmth if required under school tops or PE tops. Base layers should not be worn under shorts, as all children can wear Navy-blue joggers/leggings.

All uniform items should be clean, clearly labelled with the child's name and in good condition.

Hair
Hair should be tied up if it is shoulder length or longer and the hair band should be plain and either, blue, black, brown or white.

Jewellery
No jewellery should be worn except for plain, small gold or silver stud earrings. Earrings **MUST NOT** be worn on PE days.

School uniform is available locally at a reasonable cost (see below or on our website for stockists). There is an ample stock of second hand uniform (organised by FOSSPA), if you would like to purchase some, please make enquiries through the school office.

If you have any questions, please contact the School Office via the contact page on our website or by email to info@stpauls-dorking.surrey.sch.uk or by telephone on 01306-883547.

Logo items are stocked by these suppliers:

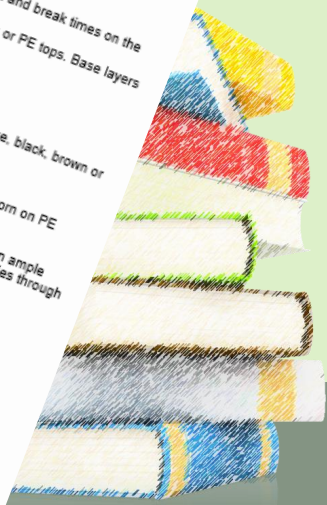
Love Your Logo/In-Press Promotions,
Ashcombe House
London Road
Dorking

Or online at:

Love Your Logo: <http://www.loveyourlogoschoolwear.com/>

School Trends: <http://www.schooltrendsonline.com/schools/StPaulsPrimarySchoolrh42h> (sample sizes are available in the school office)

My Clothing: <https://myclothing.com/ues/link/5881.school?t=1587620735044> (formerly Tesco Uniform)

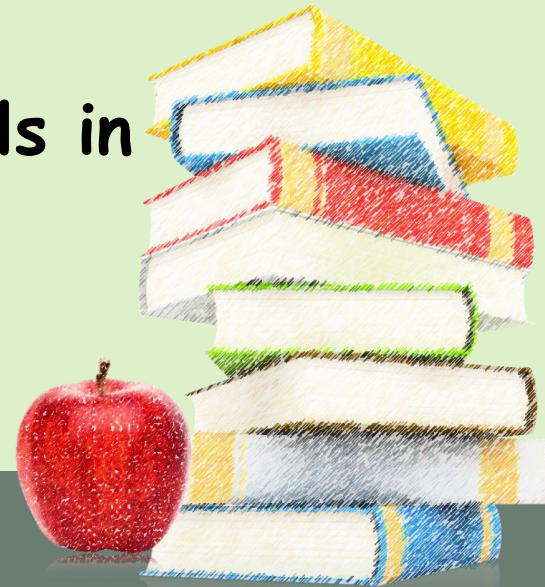


Uniform

- **PLEASE MAKE SURE EVERYTHING IS NAMED.**

Please bring a:

- named waterproof coat everyday
- Named water bottle
- Named fruit if required
- Black shoes (trainers/plimsolls in bags)





PE Days



PE Days for Year 5 are Wednesday and Friday.



Please remember that the children need to come into School in **PE KIT** on PE days (wearing school shoes to School and with trainers in a School PE Bag that should be kept at School - this is so that they can play on the field on other days).

A navy tracksuit is essential for cold weather.

Children must not wear earrings on PE Days.





OTHER KIT



PLEASE MAKE SURE EVERYTHING IS CLEARLY NAMED.

Pencil Case (small - needs to fit in tray) - this will need to stay at school. All available, at cost, at the Stationery Shop (open every Lunchtime 12:05-12:15). Please order via SCOPAY.

Small Backpack to carry Lunch / Book / extra colouring pens/pencils if wanted.



Educational Visits



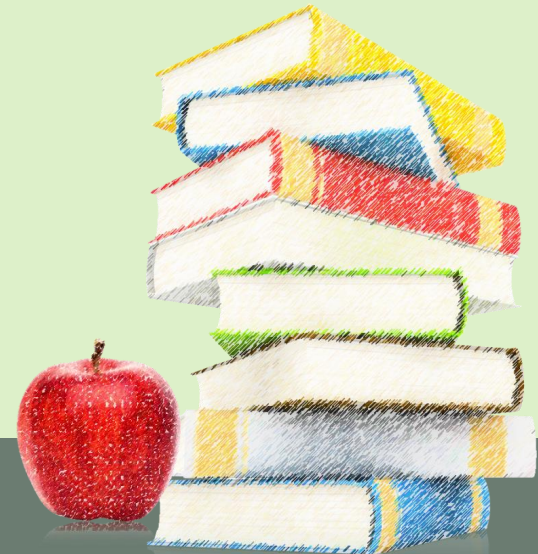
Planetarium

Viking Workshop

O2 Young Voices

PGL Windmill Hill - Residential

River study



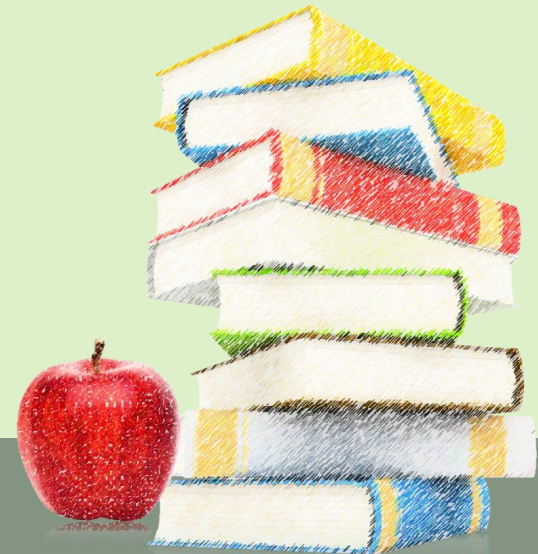


PGL



Approximate cost - £350

<https://www.pgl.co.uk/en-gb/school-trips/resources/parent-guide/about>



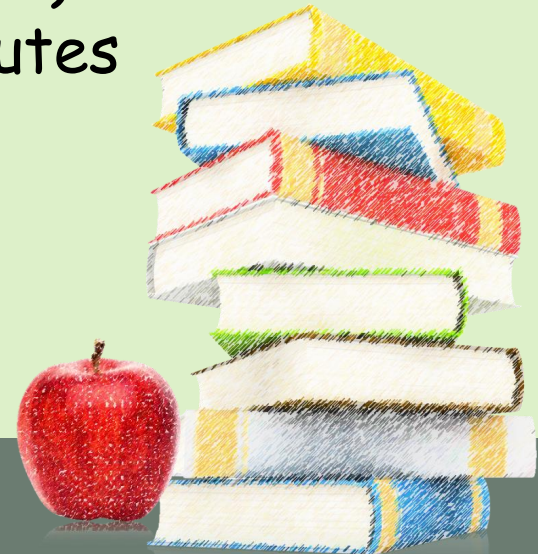


Working together



All homework set on Friday

- MyMaths
- Spelling shed
- TT Rockstars
- Topic homework
- Reading (Accelerated reading quizzes)
- Comprehension Activity - 15-20 minutes

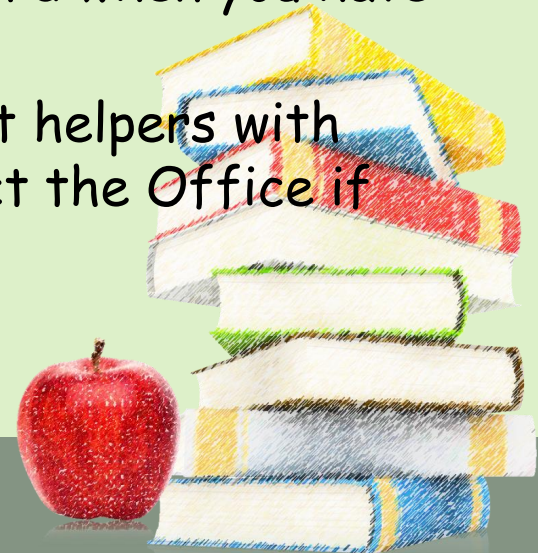




READING



- Reading in School - Reading at Home.
- Children can borrow books from School or read books from home.
- Please make sure they have their current reading book with them every day.
- Please encourage your child to read **5 times a week** and **at least twice a week with an adult** and to complete their Reading Records.
- Remember to 'sign/comment on' the Reading Record when you have read with your child.
- Parent Readers - we are always looking for parent helpers with reading through the entire School. Please contact the Office if you can help.





Accelerated Reader



What is it?

- Accelerated Reader (AR) enables us to match reading books to children's reading ability and helps teachers to assess, manage and monitor reading.

How does it work?

- Children from years 3 - 6 have been assessed in school using Accelerated Reader. (As year 2 complete the Little Wandle phonics scheme, they too will be assessed).
- Each child has a colour banded book.

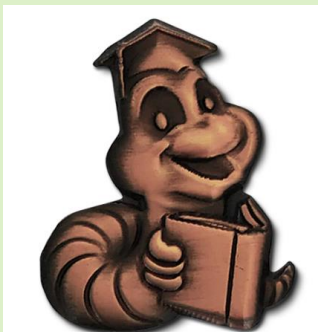
How can you check if a book from is on AR?

- Parents can visit <http://www.arbookfind.co.uk> to search all of the available books with AR quizzes.
- If it's not there, then children can still read the book, but we encourage them to also have a book from school that is colour matched to their ability.



Quizzing

- When your child has finished reading their book, they can take a quiz online at home. This is a really useful way of seeing what they have learnt. Quizzes are best taken **within 24 hours of finishing the book.**
- They can earn badges for the number of words read - bronze 100k, silver 500k and gold 1 million +





How to log in




Renaissance
See Every Student.

St Paul's CofE (Aided) Primary School

— Student Log In —
[I'm not a student](#)

Username

Please fill in this field.

Password 

[Forgot Password?](#)

Login details
are in the
back of
children's
reading
records

IMPORTANT 😊

We have a microsite with Accelerated Reader so *the only* way to log on is via this link: <https://global-zone61.renaissance-go.com/welcomeportal/6712704>




- Click on 'Accelerated Reader'

Renaissance ? LA



Home

Practice


Accelerated Reader

Star Assessments


English

 EL  R

Star Early Literacy Star Reading

Assignments

Showing: From:

 No assignments at this time



- Enter the book title

REINASCENCE

Accelerated Reader

Search for Books, Articles, or Quizzes

Enter a Title, Author, Quiz Number, or Keyword

Search

Help me find a book

Fox

Book

By Matthew Sweeney

Gerard is affected by the usual disadvantages when he moves to a new city and starts a new school. ...

ATOS Level **4.9**

Lexia® Level **770**

Interest Level **MY**

Points **4.0**

Quiz **206374 EN**

Language **English**

Take Quiz

- Click on 'Take Quiz'



Spelling Homework



- Spelling Homework in Year 5 will be set **weekly** using Spelling Shed. This will allow children to learn spellings via a series of fun, interactive games.
- Login details are also in children's reading records.
- Weekly assignments will be set relating to the spelling pattern or phonics children are learning about.



Spelling Shed is part of Ed Shed

Click on School username tab



- About
- Careers
- Store
- Get a Quote
- Ambassador
- Webinars
- Blog
- Training
- Help

Create Account

Sign In

+ Create Account

Sign In

QR Sign In

Global Username / Email **School Username**

Only use this form if you are a pupil with a school # on your login slip.

School (search by name, id or postcode)

- St Paul's Primary School, RH4 2HS #126261

Enter school postcode RH4 2HS

Password

Sign In

Enter school username and password



Click on assignments

EdShed

Assignments 0

Games set for you.

[View >](#)

Challenges

Challenge others to play.

[View >](#)

Leagues

Player and class leagues.

[View >](#)

[Join](#)



Phonics Shed

 Play!



Spelling Shed

 Play!

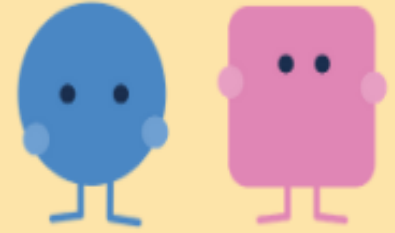


Maths Homework



- Maths homework will be set weekly on My Maths.
- Children should also practise their timetables weekly.

My Maths



- Log in at mymaths.co.uk
- Our school log in details are:
School username: stpauls20
School password: rectangle67

← SCHOOL



STUDENT

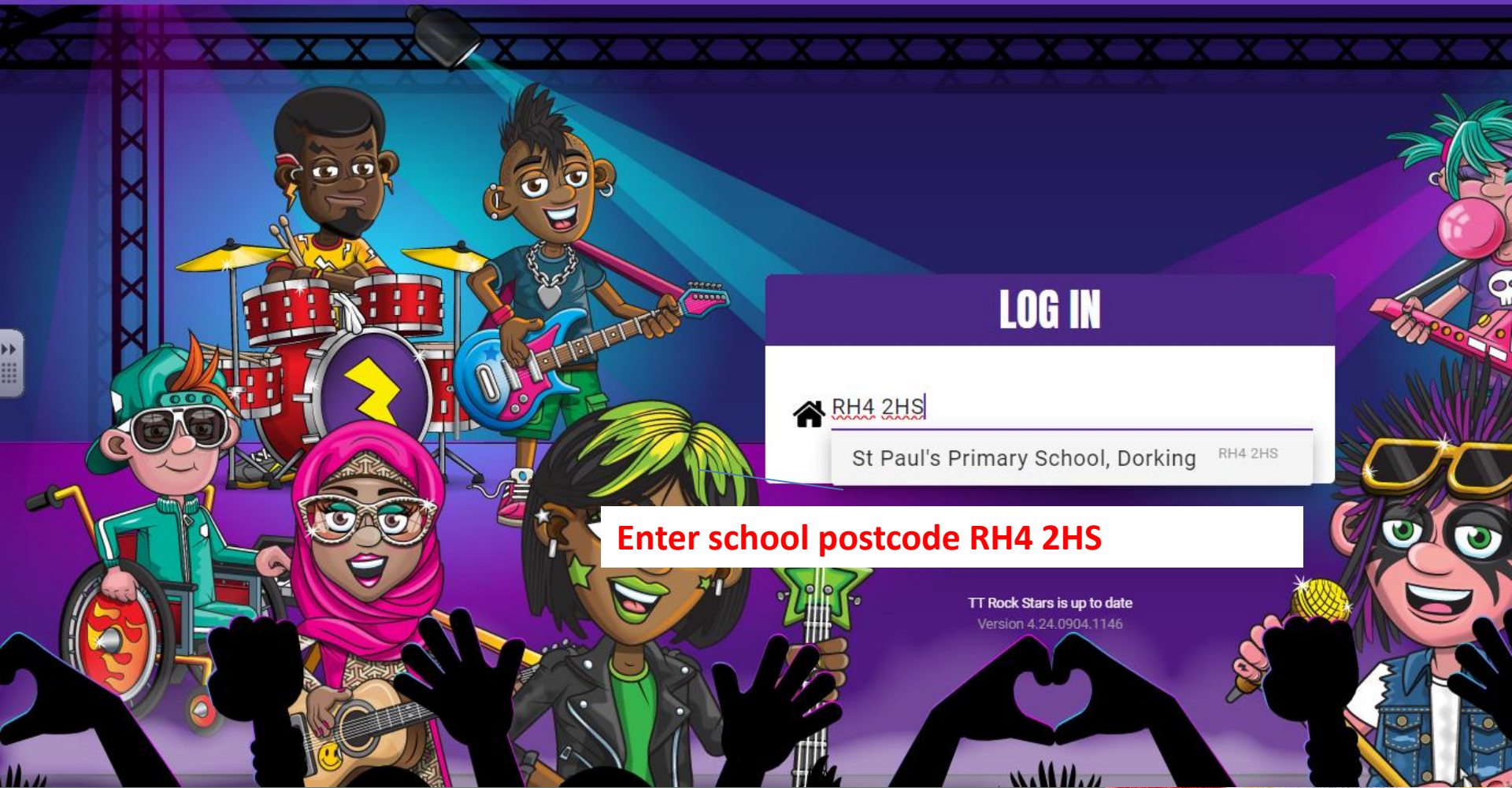
TEACHER

 **WONDE**

 **MYLOGIN**



← STUDENT



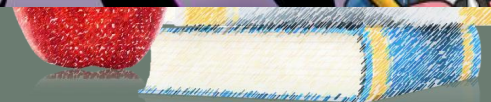
LOG IN

🏠 RH4 2HS

St Paul's Primary School, Dorking RH4 2HS

Enter school postcode RH4 2HS

TT Rock Stars is up to date
Version 4.24.0904.1146





ST PAUL'S PRIMARY SCHOOL, DORKING

Change School

Username*



catdog



PASSWORD

or



PIN

Log In

Bookmark the following url to login faster:

Click on Password



ST PAUL'S PRIMARY SCHOOL, DORKING

Change School

Username*

Password*

Log In

Bookmark the following url to login faster:
<https://play.ttrockstars.com/login/22479>





Relationship Education



- RSE (Relationship and Sex Education) will be covered within PSHE lessons.
- A letter will be sent out prior to the start of the teaching.
- More information will be available on our Website under 'About Us > Curriculum > RSE'.





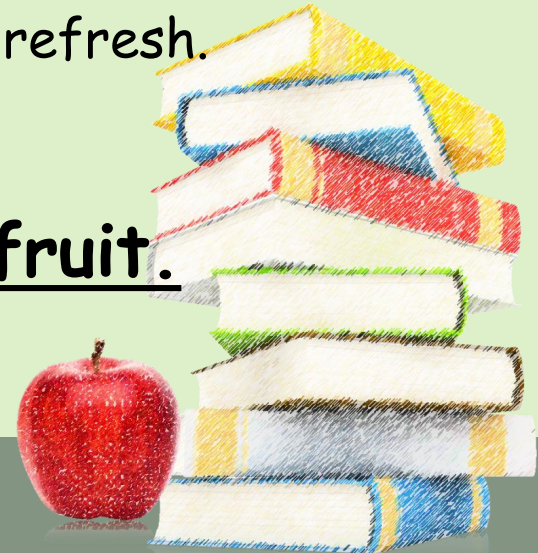
OUR CLASSROOM



Seating groups (will move around regularly - we aim to support them to be able to work with lots of different partners to help to prepare for Secondary School).

Pegs

- Water (Only Water, no squash etc.). All water bottles will be sent home daily for a wash and refresh.
- Snacks (Only fruit or veg)
- Please name Water Bottles and fruit.



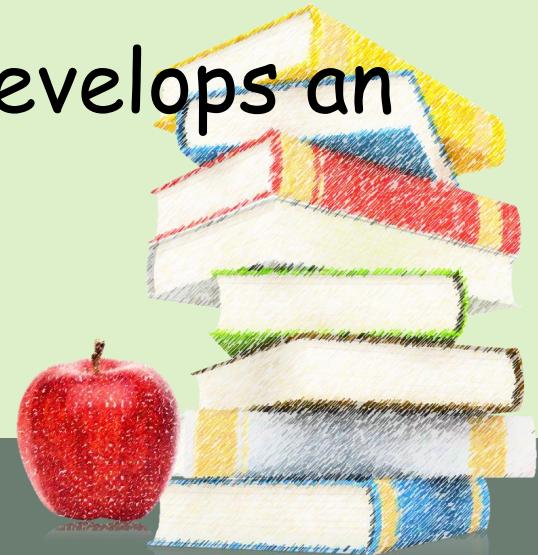


ALLERGIES



- No nuts or sesame
- No shellfish

Please let us know if your child develops an allergy or has an intolerance.

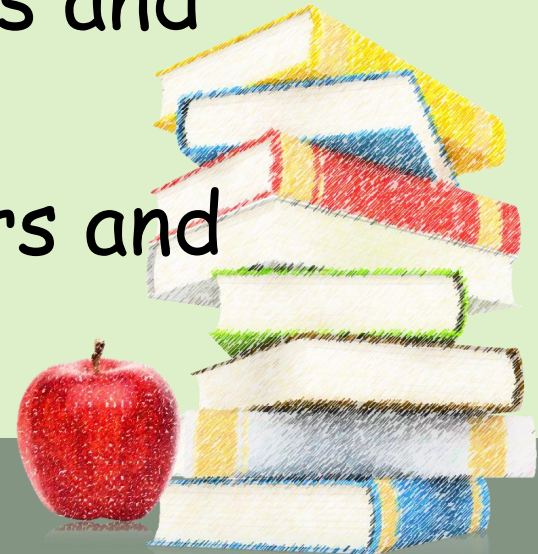




MEDICAL



- Please make sure that you have spoken to the Office if your child needs medical support at School such as an inhaler or EpiPen.
- Please ensure that all Inhalers and EpiPens are clearly labelled.
- Please make sure that Inhalers and EpiPens are **in date**.

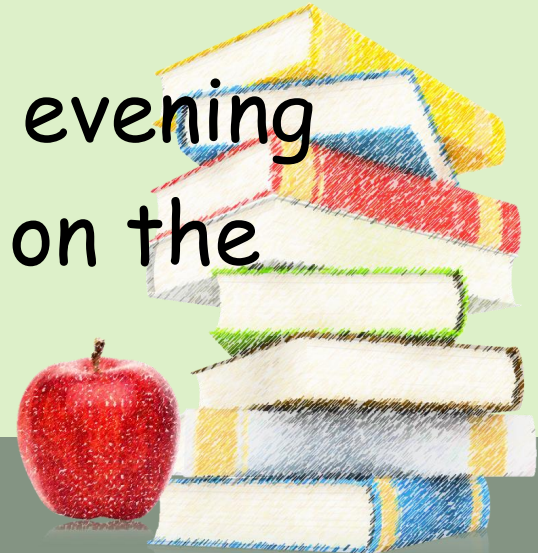




PARENTS' EVENINGS



- Parents' evenings are notified in the Newsletter.
- Parents' evenings are held in the Autumn and Spring Terms.
- There will be a longer Parents' evening for Parents who have children on the SEND register.





COMMUNICATION



If you do have any questions or queries, please contact The Year 5 Team, in the first instance, via:

- the Year 5 email address (Year5@stpauls-dorking.surrey.sch.uk) - read by any member of year group team;
- the School Office (info@stpauls-dorking.surrey.sch.uk) - confidential enquiries;
- by telephone to the School Office (01306 883457); or
- by using the Contact Us form on the Website.

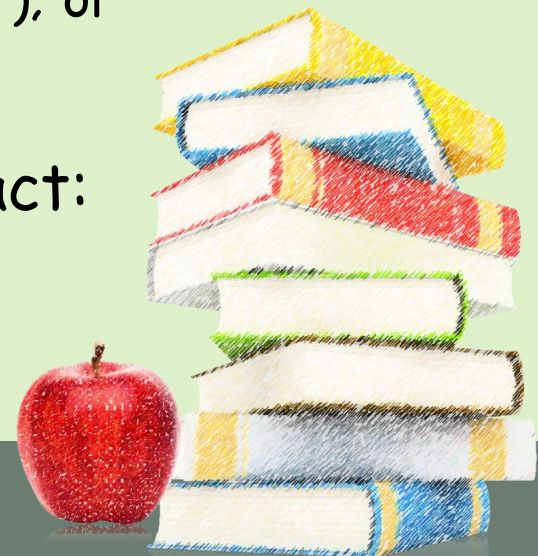
If the Team is not able to help, please contact:

Mrs McLeod (Phase Leader KS2);

Mrs Bryan (Deputy Headteacher); and finally

Mrs Alden (Headteacher)

via the School Office.





WHEELS TO SCHOOL



- Pupils may ride bikes or scooters to school at parents' discretion.
- Please ensure that they wear a helmet and that it is correctly fitted and fastened.
- Children should dismount and enter through the Year 3-4 gate.
- 'Vehicles' should be left in the KS2 bike park (by the 'Star of the Week' entrance).
- Please ensure you speak to your child about taking care in the Lane and StPs Road E as there are lots of young children walking along at drop-off and pick-up time and they are un-predictable and fast!
- Bikes and scooters must not be ridden in School!

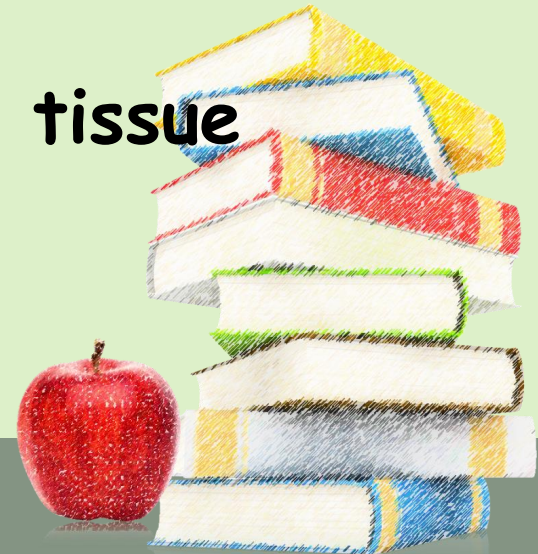




AND FINALLY...



- We are here to help and are always happy to make time to talk with you.
- Please let us know if there is anything happening in your child's life that may affect their day at school.
- **We are always grateful to receive tissue boxes!**





Thank you!

Questions?

Any Questions?

