



Year 5 Art Week 5



Theme - Colour

We are looking at the artist Picasso and how he used colour to show moods and feelings.





Cubist period

- Cubism was one of the most influential styles of the twentieth century.
- [Pablo Picasso](#) was also inspired by African tribal masks which are highly stylised, or non-naturalistic, but nevertheless present a vivid human image.
- 'A head', said Picasso, 'is a matter of eyes, nose, mouth, which can be distributed in any way you like'.

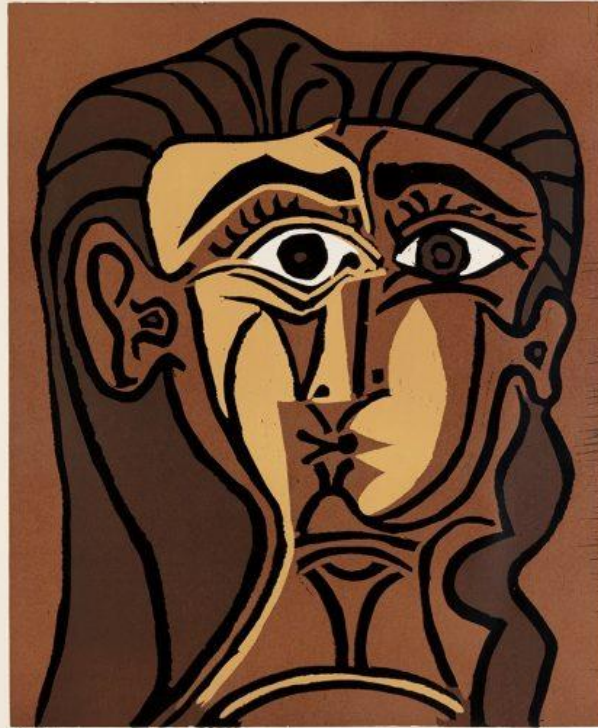


PABLO PICASSO



Cubist period

- Have a look at these paintings. What do you notice?





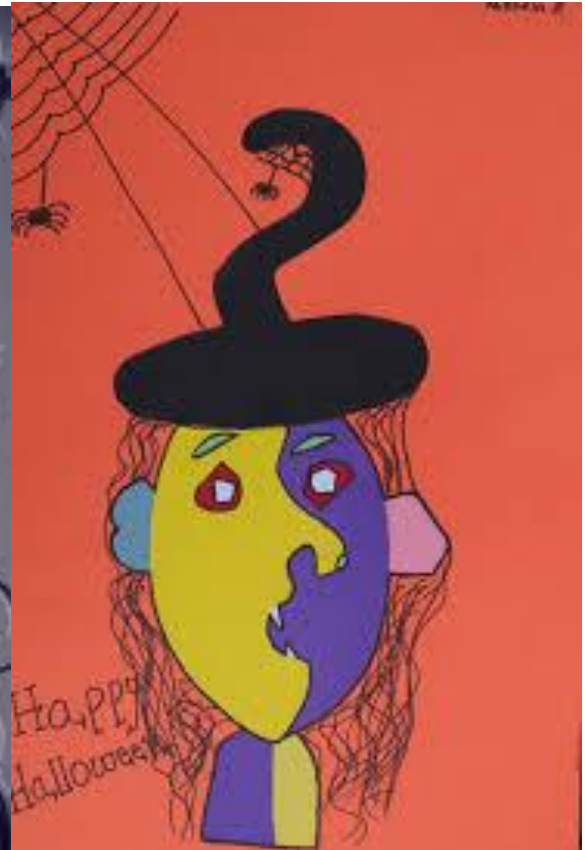
Cubist period

- Watch this video clip of Picasso portraits. What do you notice?
- <https://www.tes.com/lessons/nlxbs3iFX6AQMg/copy-of-pablo-picasso-for-elementary-art>



Main Task

- Have a look at these Picasso inspired witches.
- What do you notice?





Main Task

- To link with our theme of Wonderful world of Wizards, we are creating witches 'Picasso style.'
- Draw a portrait of a witch in the style of Picasso.
- Move the features of the eyes, nose and mouth into different positions.
- Can you make one eye look forward and the other to the side?

Post your work on
Purple Mash for us
to see.