



Plan for Week

New Unit – Wizards – Week 2

Lesson 1: Design your school

Lesson 2: Advertise your school - plan

Lesson 3: Advertise your school - write

Lesson 4: Potion Poem - plan

Lesson 5: Potion Poem - write



Year 5

English

W/b 6th July 2020

Monday



SPaG (Part 6)

What Is an Adverbial of Manner?

Adverbials can be grouped according to what they are describing.



Adverbials of manner answer the question '**in what manner**'. Can you identify them in the following sentences?

Peter can speak Spanish _____ .

We walked _____ into the hall.

My teacher seemed _____ surprised that I'd completed my homework.

Janine dances _____ .



SPaG - Answers

What Is an Adverbial of Manner?

Adverbials can be grouped according to what they are describing.



Adverbials of manner answer the question '**in what manner**'. Can you identify them in the following sentences?

Peter can speak Spanish **fluently** .

We walked **quietly** into the hall.

My teacher seemed **pleasantly** surprised that I'd completed my homework.

Janine dances **gracefully** .



WONDERFUL WIZARDS!

Week 2

A Literacy Unit based on Talk for Writing.



Lesson Aims

- I can use my imagination to design my ideal Wizard School.
- I can sketch my design.



Design your school!

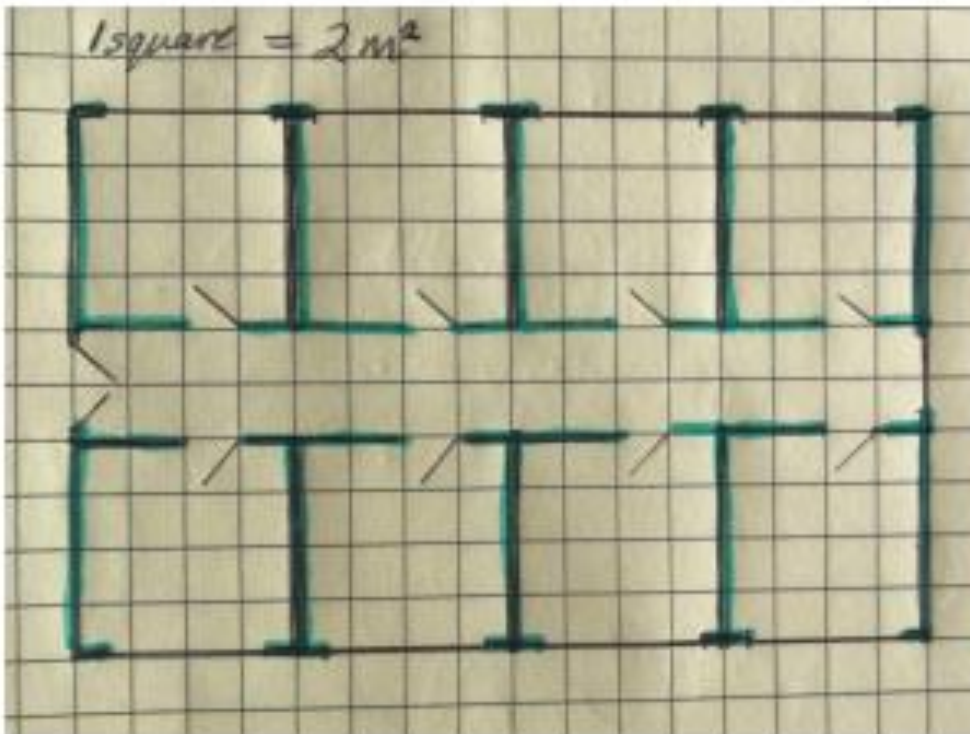


What school would you like to advertise? Maybe a school of skateboarding or cycling or cookery or computer games or ... ? Your school could be for something imaginary like a Unicorn school, a Troll school, a Dragon school ...

Take a look at the simple floor plan below. It's a type of map that lets you plan what the inside of a building looks like. It shows a 'bird's eye view' of how the space is divided up as if you were looking down on it from above. Can you work out how the doors and windows are shown on the plan?



Design your school!



As you can see, this is a rather dull, very symmetric school plan with 8 square rooms. But you can plan your school any way you like and decide what is going to be the focus of each room. Sketch out your ideas on any old piece of paper and, once you've decided what you want, draw it neatly on the graph paper below as this makes drawing the plan easy.

Remember to add as much detail and explanation as you can. What is each room used for? Are there two or more floors? You can copy the next page a few times and use one sheet for each floor if you would like to.

