



Year 4 Science

DIGESTION – Lesson 2 How we digest our food



Learning intention

- To understand the function (the jobs) of the different parts of our digestive system.

Success Criteria:

- I can label a diagram of the digestive system.
- I can explain what **SOME** parts of the digestive system do.
- **CHALLENGE:** I can explain what **MANY** parts of the digestive system do.

The Digestive System

Before we start our learning this week, can you remember the different types of teeth and their functions (jobs)?

Here's a clue:

M_____

In_____

C_____

How did you get on?

Molar



Molars are used for chewing and grinding food.

Incisor



Incisors are used for biting and cutting food.

Canine



Canines are used for tearing and ripping food.

The Digestive System

The next slide has a diagram (labelled picture) of our digestive system.

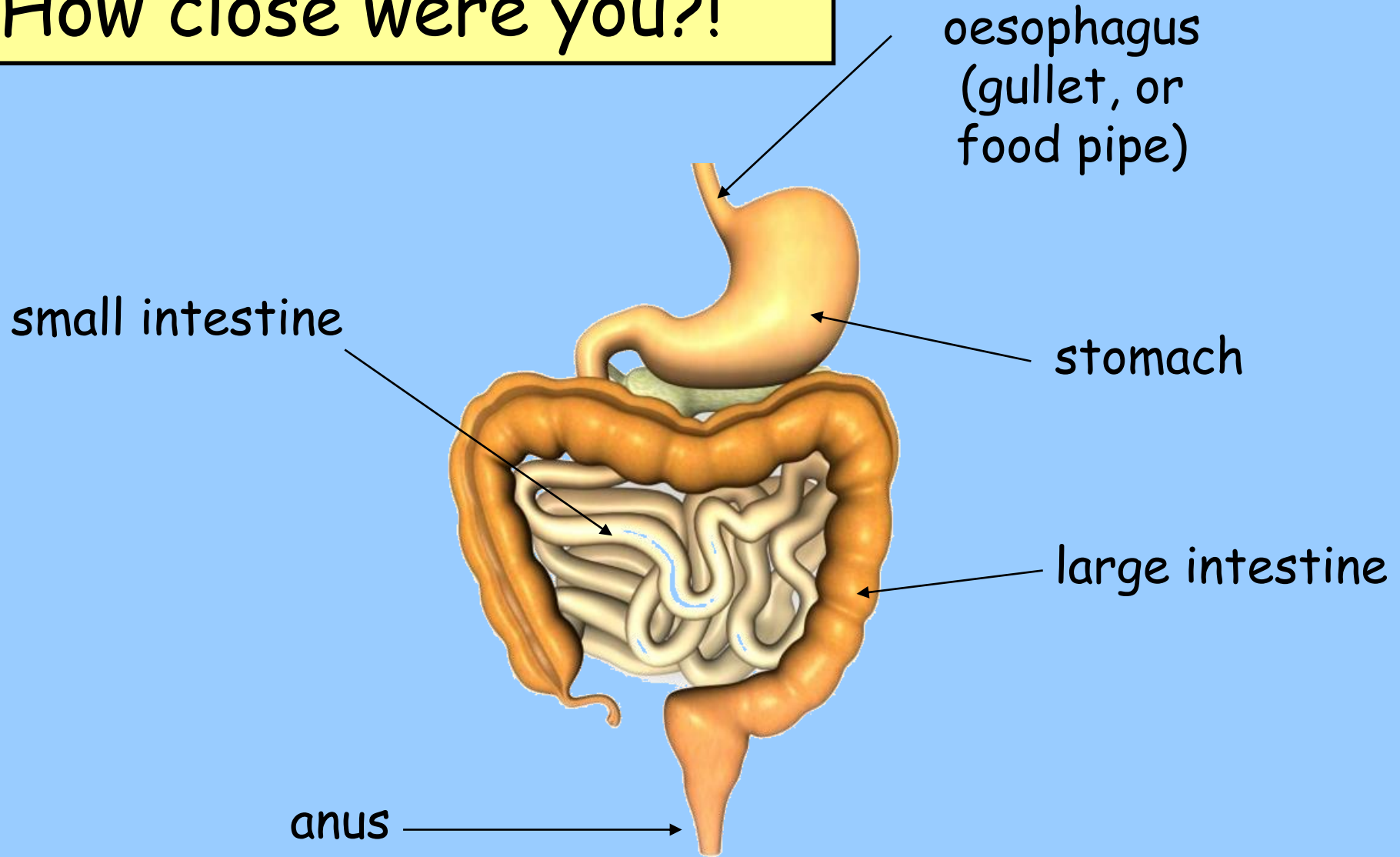
Don't peek - can you draw your own diagram (labelled picture) of what you think our digestive system looks like? *Don't worry if you don't know - just have a go!*

Here's a clue what to include 😊:

Stomach, food pipe (called the oesophagus), large intestines, small intestines and the anus

Watch out when you spell the word **stomach** - it's a tricky one!

Here's a diagram of the human digestive system
How close were you?!



Now you are going
to read about what
each part does

If you want a challenge make notes when you
are reading 😊

The Digestive System

Each part has a different job to do:



The mouth contains teeth.

These chew the food and break it into smaller pieces.

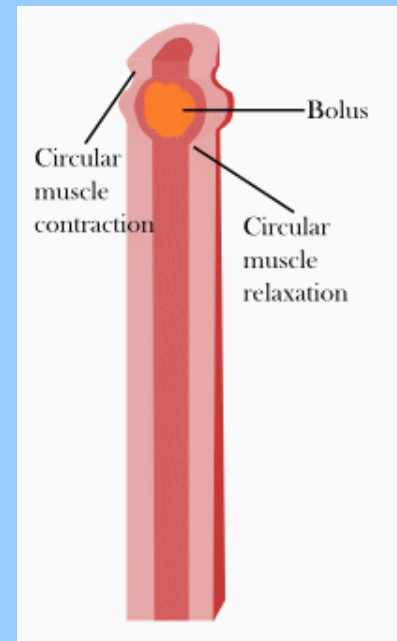
The tongue pushes food to the back of the mouth so you can swallow it.

The Digestive System

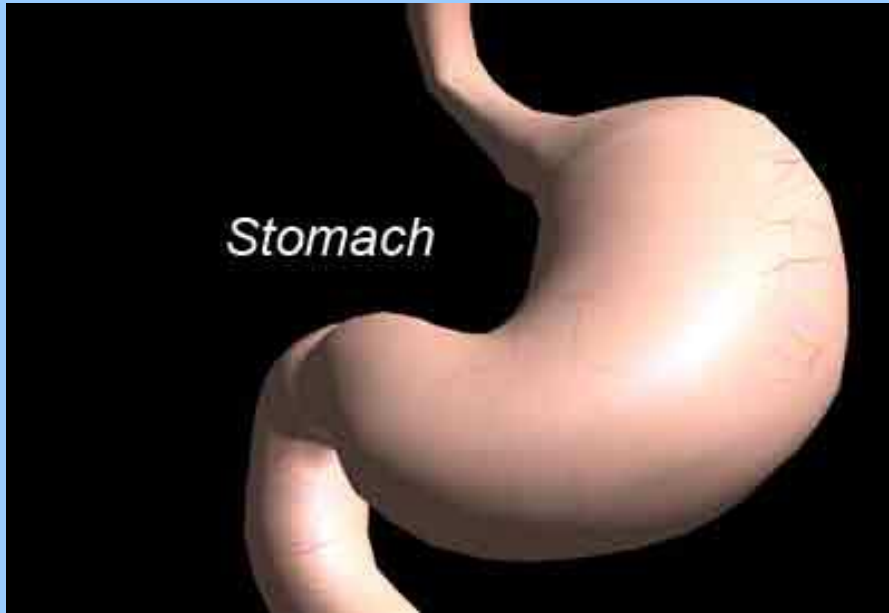


The oesophagus, or food pipe, joins the mouth and the stomach.

Food is squeezed along this tube into the stomach.



The Digestive System



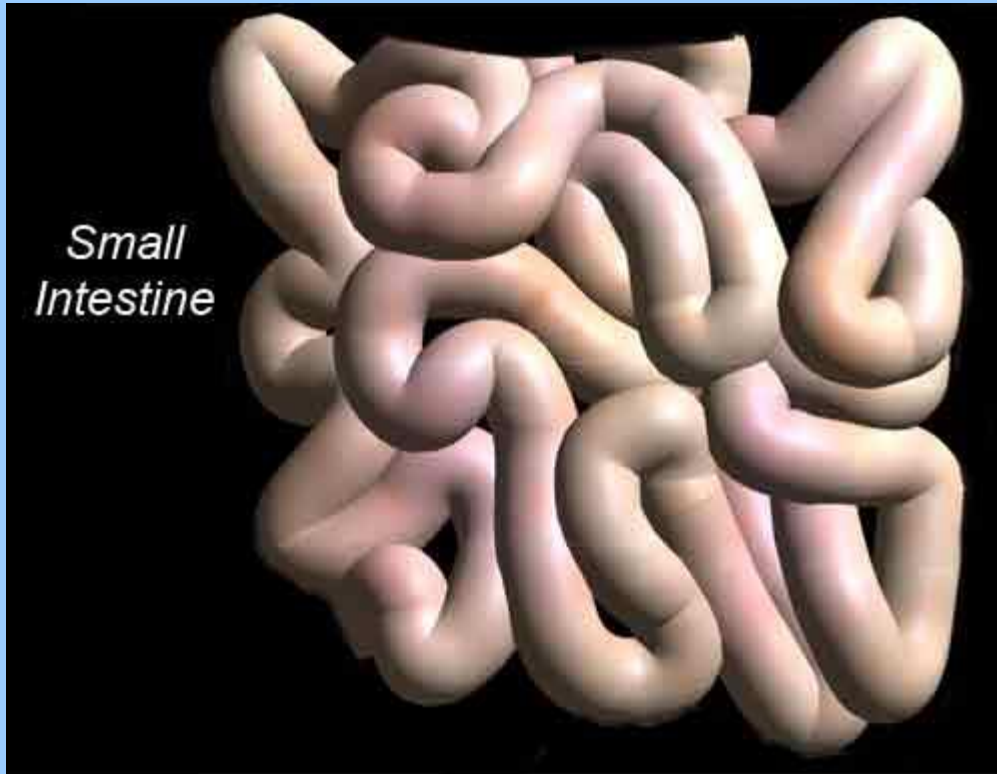
The stomach is a bag of acid.

The acid in the stomach, and special chemicals called **enzymes** break down the food even more.



<https://www.bbc.co.uk/bitesize/topics/z27kng8/articles/zg2g7p3>

The Digestive System

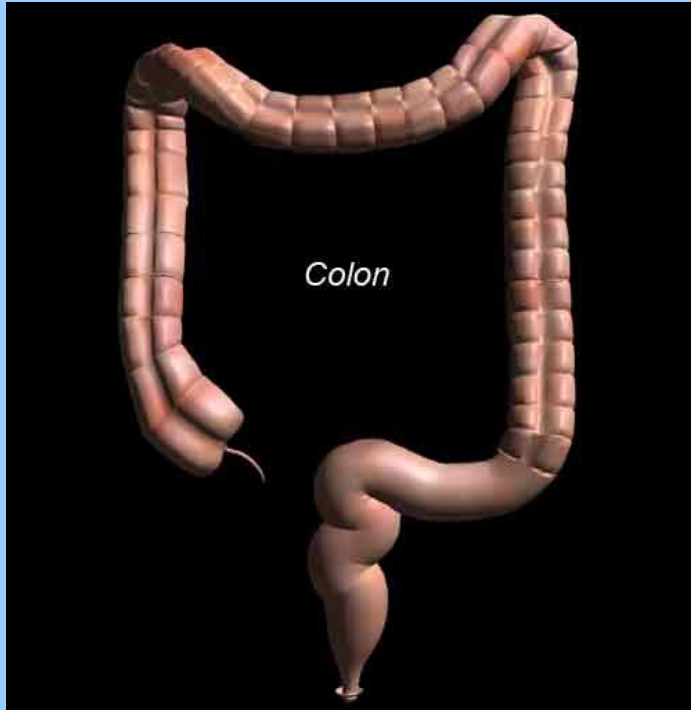


The small intestine is 6-7 metres long!

In the small intestine, the broken down food gets into the blood so the body can use it.

<https://www.bbc.co.uk/bitesize/topics/zv9qhyc/articles/zdkfvk7>

The Digestive System



The large intestine is about 1.5 metres long.

In the large intestine, the body **absorbs (takes out) a lot of water** from the digested food.

The Digestive System

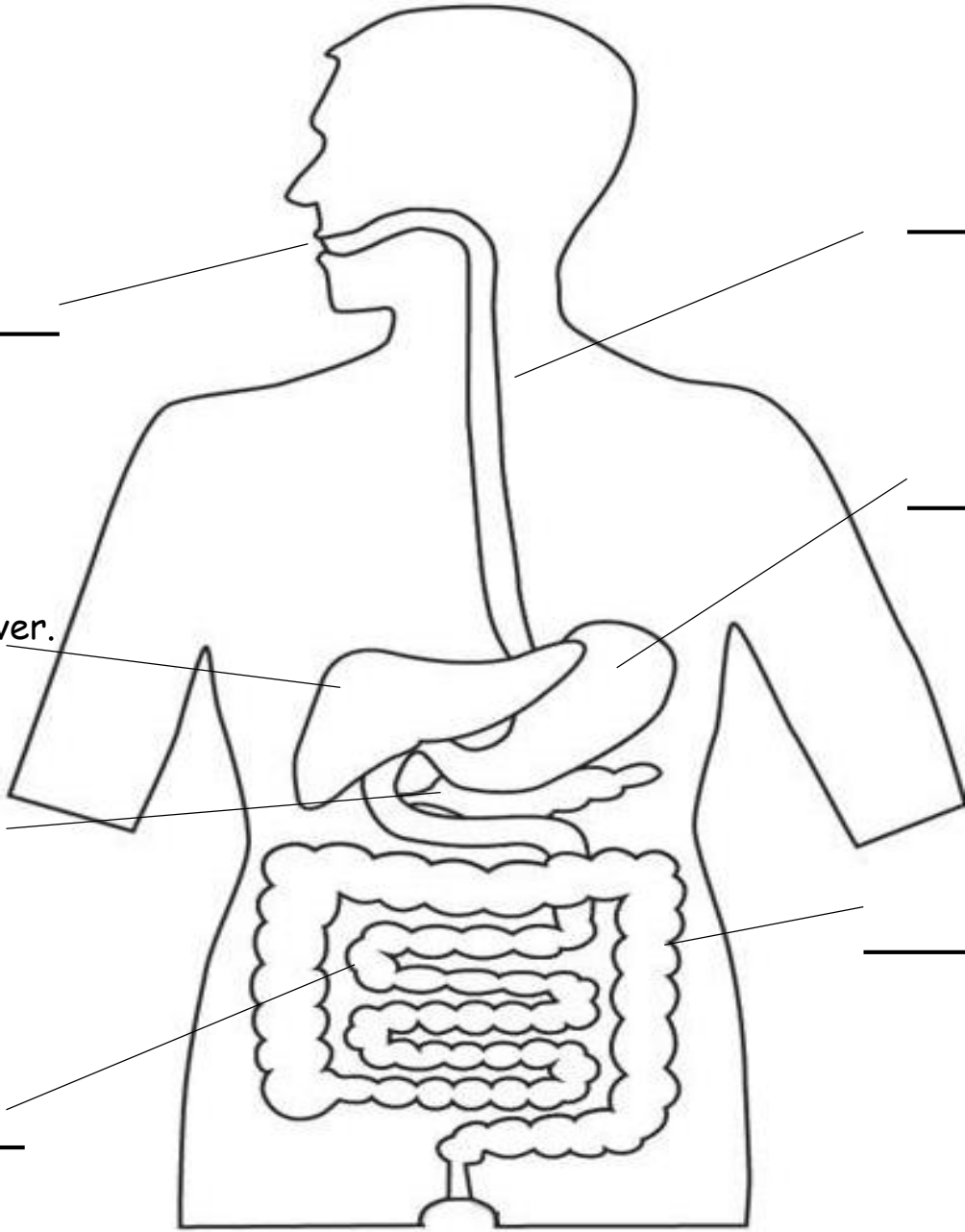


At the end of the digestive system, the left over stuff that the body can't use leaves the body through the anus when you go to the toilet.



Activity

- Label the parts of the digestive system in your **neatest handwriting**.
- **Challenge**: add detail to your diagram using your notes.
- **Extra challenge**: find out the functions of the liver and pancreas.
- Click on one slide for the worksheet and two slides for the answers.



Challenge - this is the liver.
Can you find out its
function?

Challenge - this is the
pancreas.
Can you find out its
function?

ANSWERS!

