

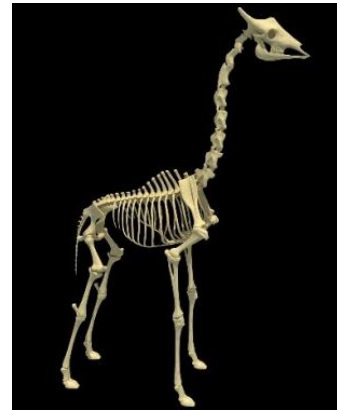
LO: To know that animals have skeletons to provide protection, support and movement

SC: I can observe closely

I can begin to draw simple conclusions

I use relevant scientific language

Compare these two animal skeletons



---

---

---

---

---

---

---

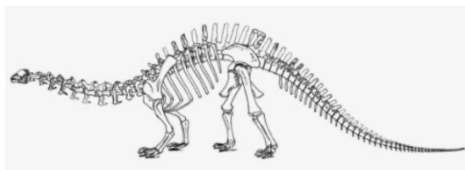
---

Can you find one thing that is the same about them and give a reason why that might be?

---

---

Why do you think the dinosaur might have had such a long tail?



---