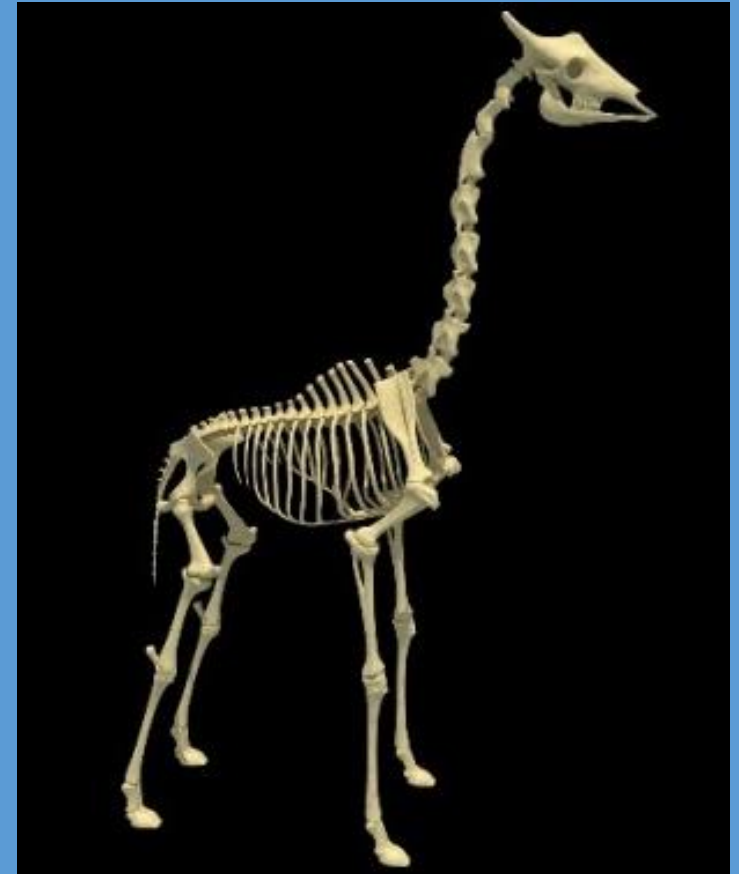


What is the same? What is different?



They both have bones and joints.

They both have skulls.

They both have rib cages

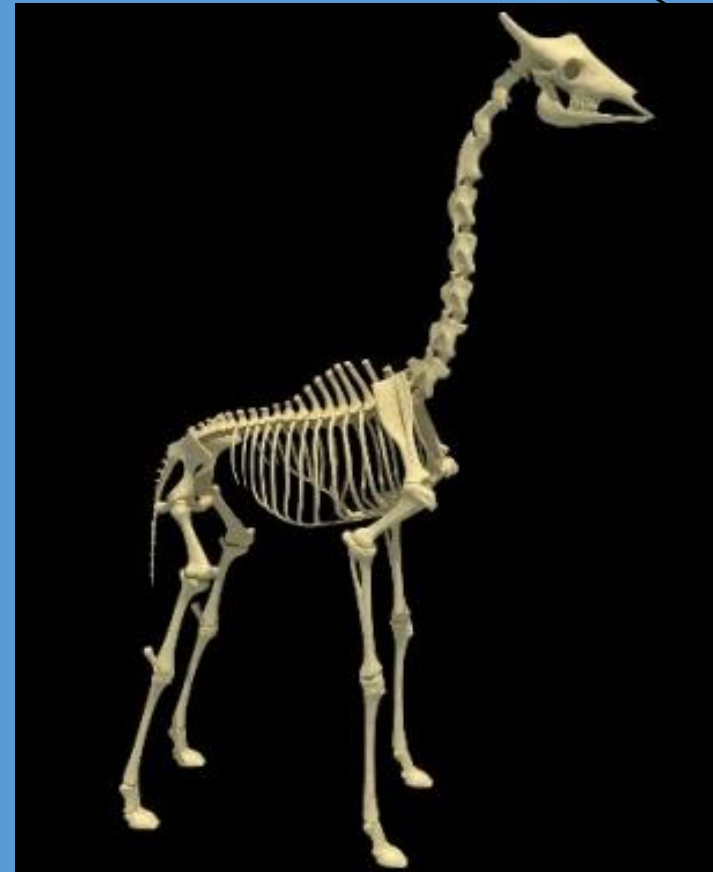
They both have spines.

The bones are inside their body.

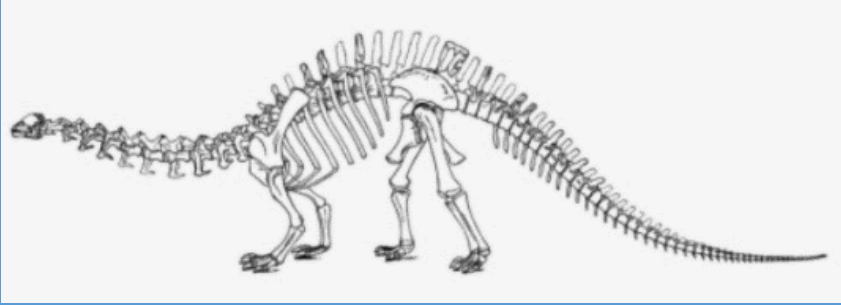
They have eye sockets on the side of their heads..



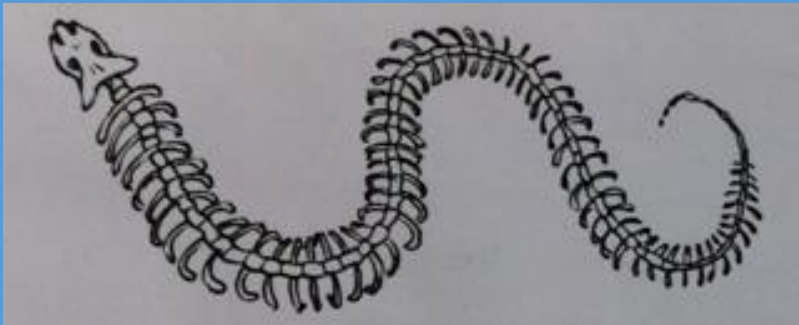
- Only this skeleton's got wings.
- It's leg joint go backwards.
- It's got a beak.
- This has two legs and feet.



- Only this skeleton has four legs.
- The leg joints go forwards.
- It has hooves.



Why do you think the dinosaur might have had such a long tail?



Why do you think the snake has lots of smaller bones that are not joined together?