



Year 3 Maths 15th July 2020



Lesson Aims

- **Learning Intention**

- To be able to tell the time to either 1 or 5 minute intervals.
- To be able to tell the time on a 24 hour clock.

- **Success Criteria**

- I know the hour hand is the short hand.
- I know the minute hand is the long hand.
- I know there are 60 minutes in an hour.
- I know the difference between am and pm.
- I can count in 5's and 1's.



Fluency Starter

- How many seconds are there in a minute?
- How many seconds are there in three minutes?
- How many minutes are there in an hour?
- How many minutes are there in four hours?
- How many hours are there in a day?
- How many hours are there in five days?
- **Top tip - use a grid method to help you.**



Fluency Starter Answers

- How many seconds are there in a minute? **60**
- How many seconds are there in three minutes? **180**
- How many minutes are there in an hour? **60**
- How many minutes are there in four hours? **240**
- How many hours are there in a day? **24**
- How many hours are there in five days? **120**
- **Top tip - use a grid method to help you.**



Main Teaching

- Today we're telling the time on the 24 hour clock.
- Please don't move your child on to next stage of learning until they feel confident.
- Yesterday's Power Point is available to help with the teaching of telling the time to 5 and 1 minute intervals. There are also worksheets available.



Fluency

Please watch this video

<https://www.bbc.co.uk/bitesize/topics/zkfycdm/articles/zcrmqty>

There are 24 hours in one day, but the day can be measured by splitting it into two halves. The first 12 hours of the day - from midnight to midday - are called AM, and the next twelve hours are called PM.



Fluency

Put these times in order from earliest to latest.

04:10pm

20 minutes
past 2 in
the
afternoon

11:20am





Fluency Answer

Put these times in order from earliest to latest.

11:20am



20 minutes
past 2 in
the
afternoon

04:10pm

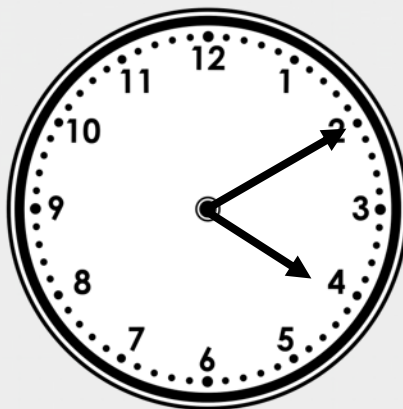
Varied Fluency 1

Match the analogue clocks and 24-hour clocks which show the same time.

A



B



C



D

06:55

E

13:20

F

16:10

Varied Fluency 1

Match the analogue clocks and 24-hour clocks which show the same time.

A



B



C



D

06:55

E

13:20

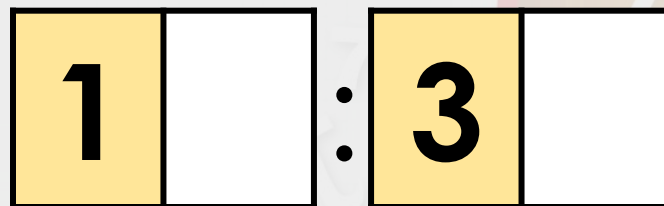
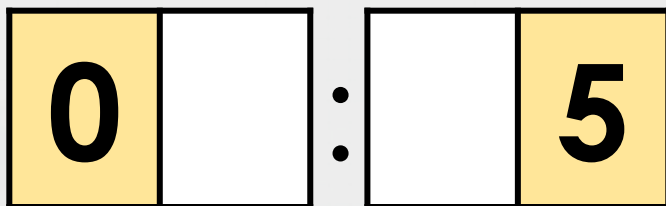
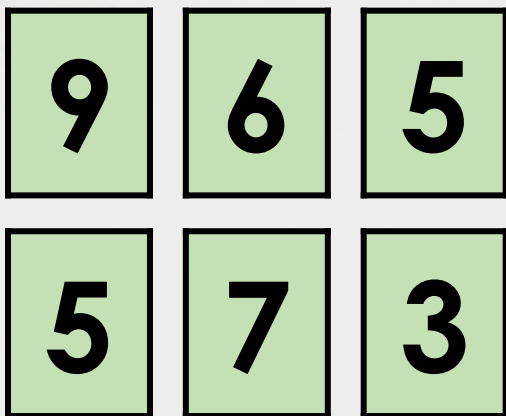
F

16:10



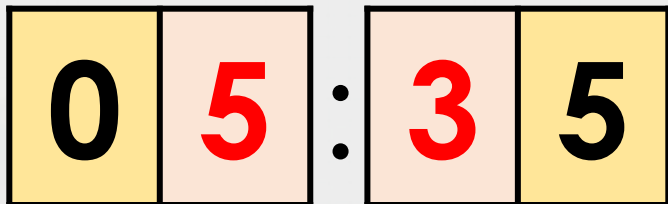
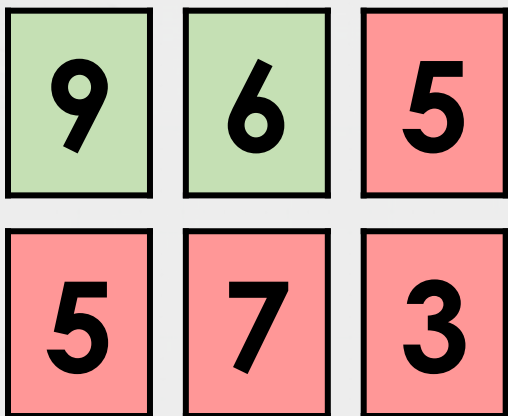
Varied Fluency 2

Choose number cards to fill in the 24-hour clocks with two times that match the analogue clock.



Varied Fluency 2

Choose number cards to fill in the 24-hour clocks with two times that match the analogue clock.



Varied Fluency 3

A



(am)

B

15:05

D



(pm)

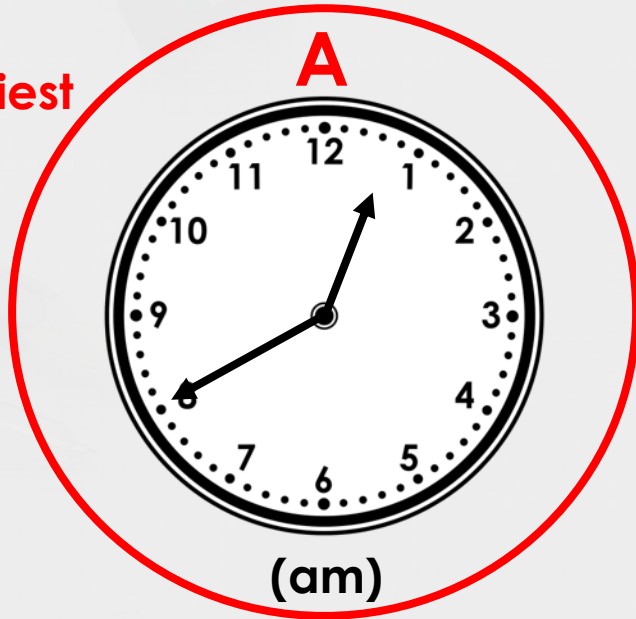
C

23:50

**Which of these times is the earliest?
Which of these times is the latest?**

Varied Fluency 3

earliest



B

15:05

D



C

latest

23:50

Which of these times is earliest? **A**

Which of these times is latest? **C**



Fluency

- Please complete the sheet entitled MATHS Wednesday 24hour clock.
- There is a challenge sheet available. The answers for it are on the second sheet.
- There is also work set on DoodleMaths and Purple Mash about telling the time.



Activity Answers 5 minute intervals

- 10:20
- 6:30
- 7:45
- 11:50
- 3:05
- 9:40
- 8:55
- 5:10
- 1:35



Activity Answers 1 minute intervals

- 5:04
- 9:40
- 2:09
- 3:55
- 1:22
- 7:29
- 12:10
- 6:14
- 8:03
- 11:42
- 10:02



24 hour clock worksheet answers

4a. A matches with E. B matches with F. C matches with D.

5a. 02:15, 14:15

6a. C is earliest. B is latest.

4b. A matches with F. B matches with D. C matches with E.

5b. 21:35, 09:35

6b. A is earliest. C is latest.



Challenge sheet answers

8a. 11:23, 23:23

9a. D is earliest. A is latest.

8b. 02:16, 14:16

9b. B is earliest. E is latest.