

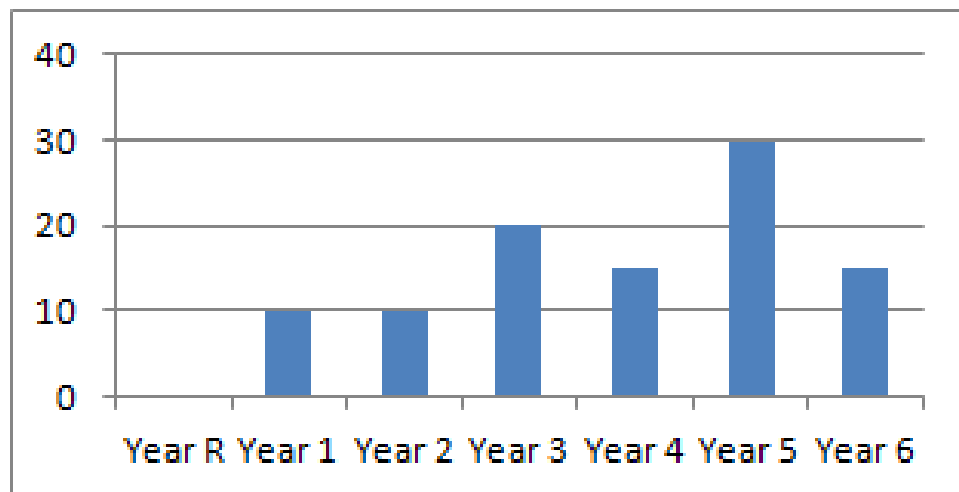
LO: To be able to interpret data using tables and bar charts

SC: I can read a bar chart and check that the information has been presented correctly

I can answer questions by looking at the information from the bar chart.

Year group	Amount raised
Year R	£0.00
Year 1	£10.00
Year 2	£15.00
Year 3	£20.00
Year 4	£15.00
Year 5	£30.00
Year 6	£15.00

A bar chart to show the amount of money raised for charity in each year group.



When the children transferred the data from the table to the bar chart they made a mistake.
Can you correct it.

LO: To be able to interpret data using tables and bar charts

SC: I can read a bar chart and check that the information has been presented correctly

I can answer questions by looking at the information from the bar chart.

1. Which year group raised the most amount of money?

2. Which year group raised the least amount of money?

3. How much more money did year 3 raise than year 4?

4. How much more money did year 5 raise than year 6?

5. How much more money did year 6 raise than year 2?

6. How much less money did year 1 raise than year 4?

7. How much less money did year 4 raise than year 5?

8. How much money did year 1, year 2 and year 3 raise altogether?

9. How much money year 4, year 5 and year 6 raise altogether?

10. How much money did all the year groups raise altogether?

11. If the school wanted to raise £125 for their charity, how much more do they still need to raise?

12. Year R forgot to put their data on the bar chart - they raised £15. Draw this on the bar chart.

13. Now that Year R's data has been recorded, how much more money does the school still need to raise to get £125 in total?