



# **Year 2**

# **ENGLISH**

## **09/12/2020**



# A letter from Santa

Dear Year 2

It is not often that I write to children at this time of year because I am so busy but I have an emergency that I hope you can help me with.

My magical elf helpers have heard about a strange creature who is planning to spoil Christmas for everyone! Apparently, he hates Christmas and he doesn't want anyone to celebrate. It seems that he has done this before and people thought he had changed but he hasn't.

Please can you make sure everyone at your school knows about this and can identify him so we can stop him before it is too late! This is all the information I have so far.

- He has green fur
- He has yellow eyes
- He has a big belly
- He has long, thin arms and legs
- He is mean, nasty and selfish
- He has a pet dog

Please do all you can to help and together we can stop this meanie and save Christmas for everyone!

Yours sincerely

Santa Claus



# Who is Santa talking about?

*Dear Year 2*

*It is not often that I write to children at this time of year because I am so busy but I have an emergency that I hope you can help me with.*

*My magical elf helpers have heard about a strange creature who is planning to spoil Christmas for everyone! Apparently, he hates Christmas and he doesn't want anyone to celebrate. It seems that he has done this before and people thought he had changed but he hasn't.*

*Please can you make sure everyone at your school knows about this and can identify him so we can stop him before it is too late! This is all the information I have so far.*

- He has green fur*
- He has yellow eyes*
- He has a big belly*
- He has long, thin arms and legs*
- He is mean, nasty and selfish*
- He has a pet dog*

*Please do all you can to help and together we can stop this meanie and save Christmas for everyone!*

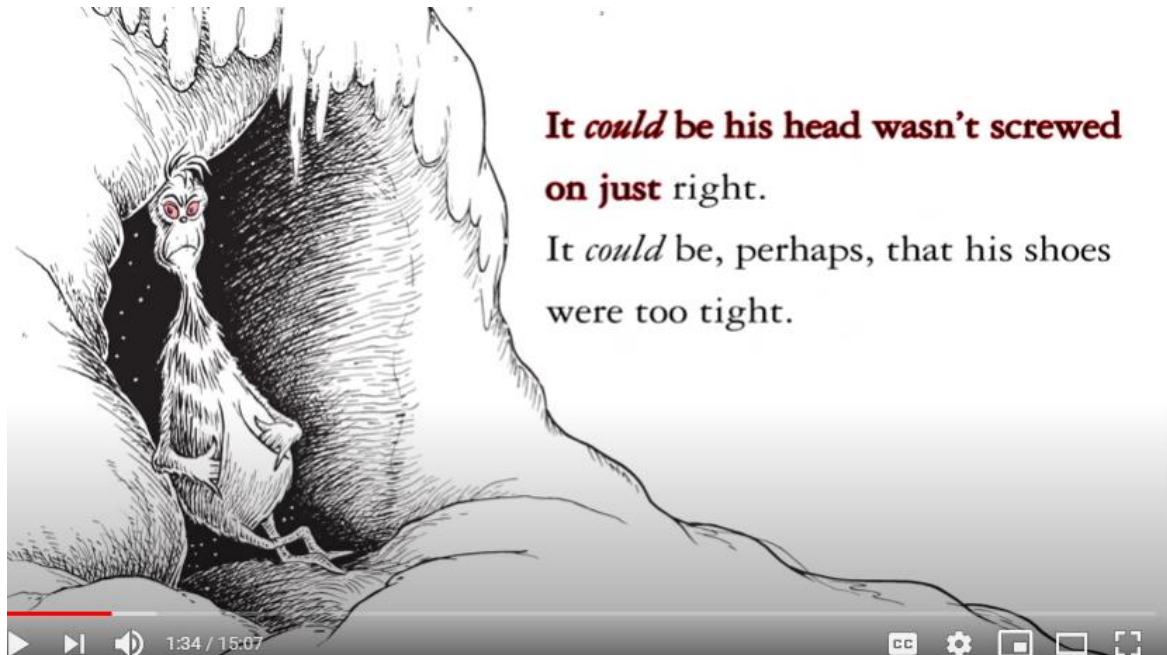
*Yours sincerely*

*Santa Claus*



# It is the Grinch and he has started to be mean again...

<https://www.youtube.com/watch?v=YOpKuQO1FkA>





## Main Teaching

This week we are going to describe the Grinch using noun phrases, powerful verbs and adverbs so that we can make wanted/warning posters to put around the school so people can stop him before he steals Christmas.

Today we are going to think of some noun phrases to describe the Grinch.



# Main Teaching

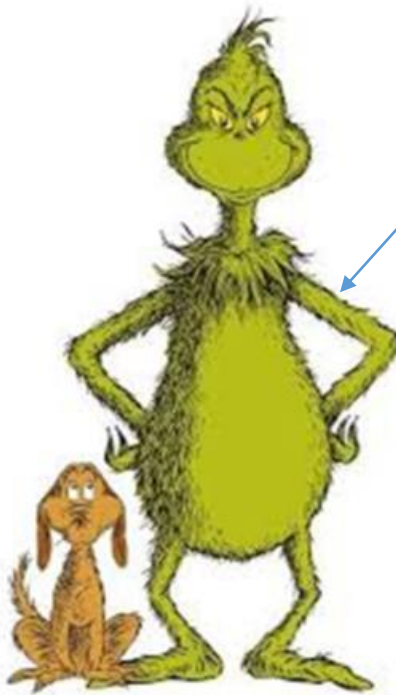




# Main Teaching

Think about some noun phrases we could use to describe the Grinch. Lets also think about his personality.

Noun phrase- Adjective and a noun or 2 adjectives and a noun.



Rough, green fur

## Personality

Mean

Selfish



## Your task...

Look at the sheet attached and label the picture of the Grinch using noun phrases.

Write some adjectives to describe his personality.