



Year 1
Maths
Monday 22/6/2020
Telling the Time

Aim: To be able to tell the time to the half hour.

I can tell different o'clock times on a clock.

I can draw the hands on a clock to show different o'clock times.



Starter:

- Can you recite the 7 days of the week in the correct order?
- Which day comes **after** Thursday?
- Which day comes **before** Monday?
- If today was Friday, what day would it be **tomorrow**?
- If today was Wednesday, what day would it have been **yesterday**?
- If **tomorrow** is going to be Tuesday, what day is it today?
- If **yesterday** was Saturday, what day is it today?



What do you know about telling the time?

- Tell an adult what you know about telling the time.
- Do you know how many minutes there are in one hour?
- **There are 60 minutes in one hour.**
- Do you know how many hours there are in one day?
- **There are 24 hours in one day.**



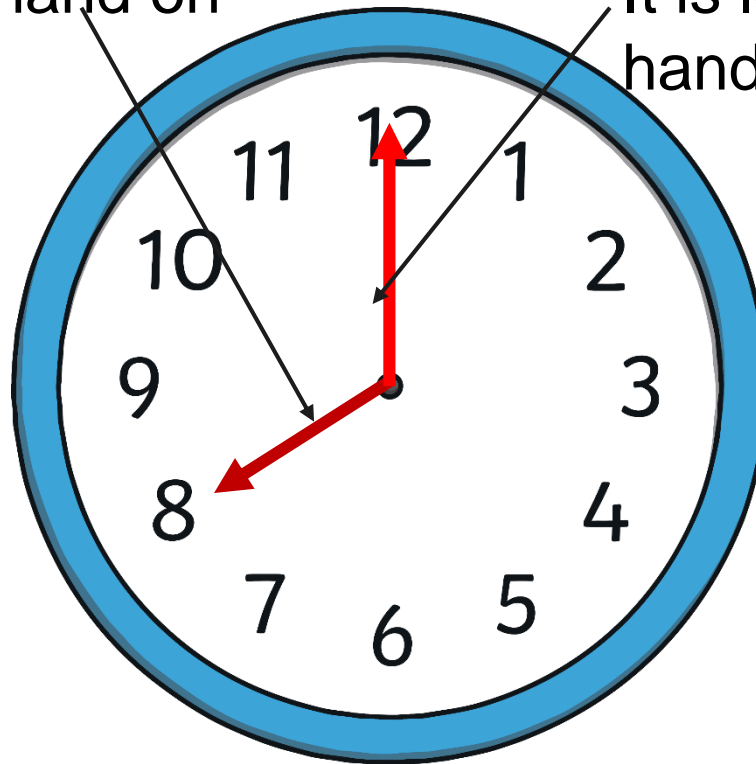
Hours and Minutes

This is the **hour** hand.

This is the **minute** hand.

It is the shortest hand on the clock.

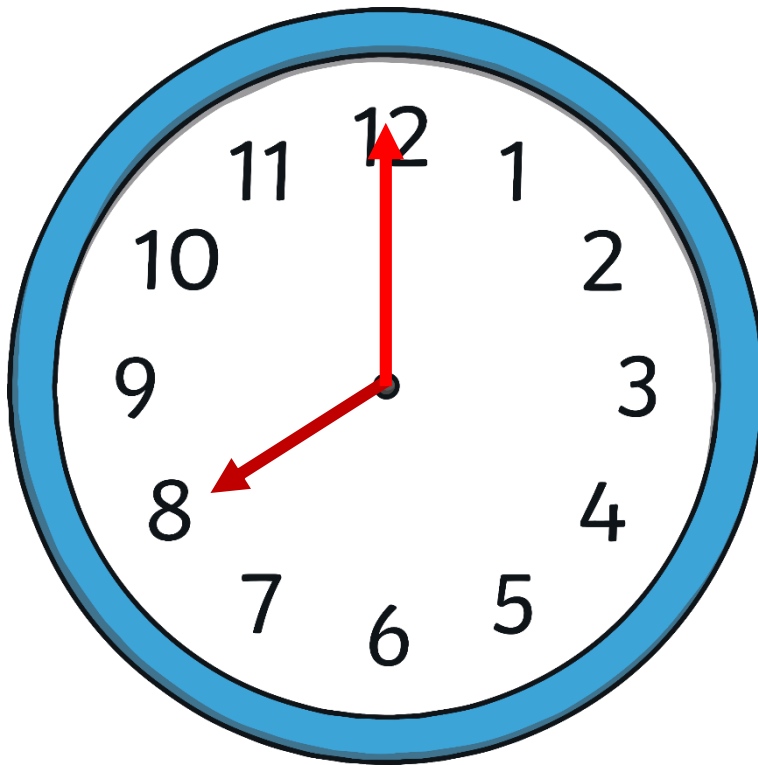
It is longer than the hour hand.





Hours and Minutes

When the minute hand is pointing to 12, it is showing a full hour.
We call this time '**o'clock**'.



On this clock, the hour hand is pointing at the 8 and the minute hand is pointing to the 12.

This clock is showing that the time is **8 o'clock**.



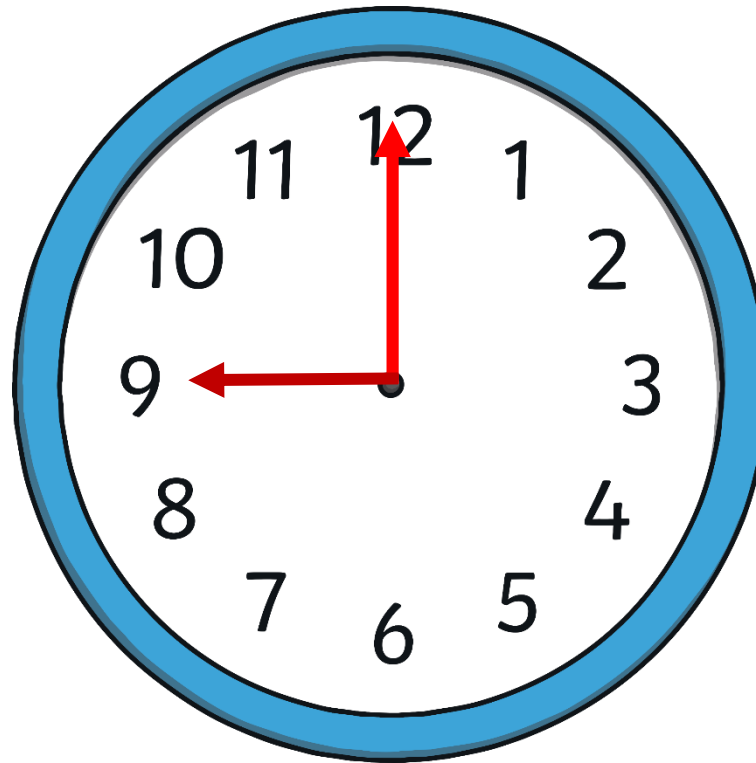
The long minute hand keeps moving around the clock every minute until it gets back to the top again.

It takes 60 minutes / 1 hour to do that and then it will be one hour later.

So after 8 o'clock, what time will it be one hour later?

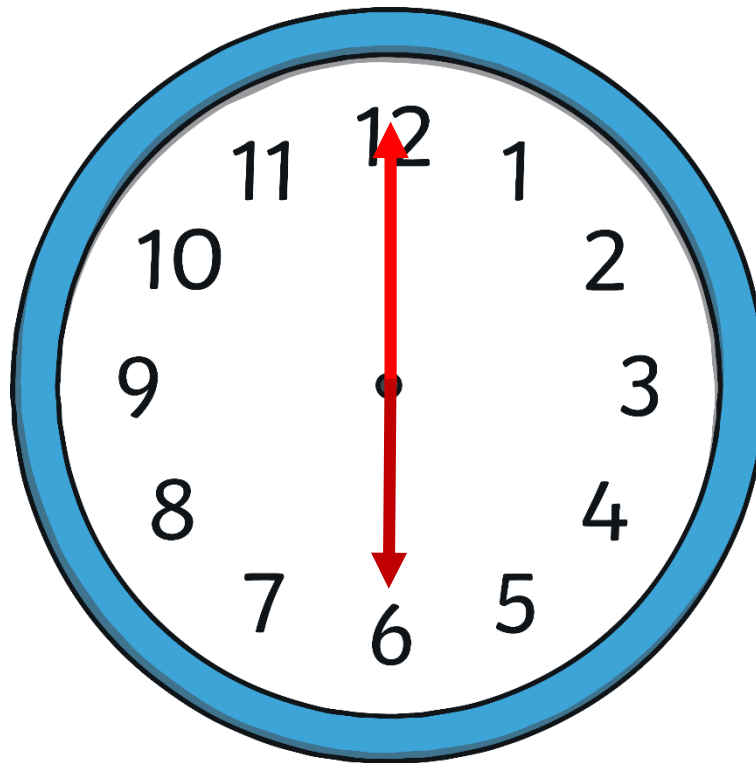


It will be 9 o'clock





What time is it now?

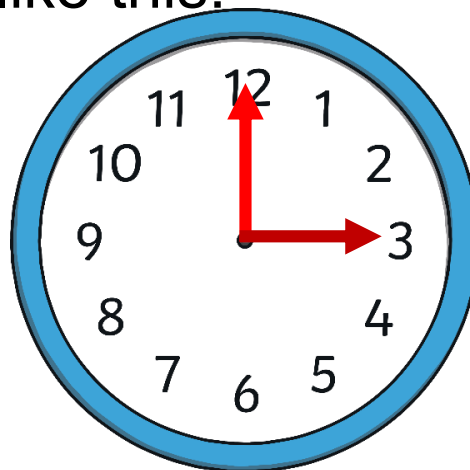


It is 6 o'clock.



Activity:

- You are going to draw the hands on your clock to show different o'clock times.
- Remember: the **long/ minute** hand always points to **12** when it is “something o'clock”.
- The **short/ hour** hand will point to the **hour**, so if it is 3 o'clock it will look like this:





Can you draw each of these times on your clock in turn?

- 8 o'clock
- 5 o'clock
- 1 o'clock
- 7 o'clock
- 10 o'clock
- 3 o'clock
- 4 o'clock
- 11 o'clock
- 2 o'clock
- 6 o'clock
- 12 o'clock
- 9 o'clock

(Home learners: Please use the activity sheet provided and draw each time on a new clock face.)



**Finally: Which clock shows 2 o'clock?
What times do the other clocks show?**

